

# EPIDEMICS and IMPACT of AIDS and STRATEGIES for CONTROL in P.R.China

Chinese Center for Disease Control & Prevention  
National Center for AIDS/STD Control & Prevention



## A. 4 DIFFERENT EPIDEMICS

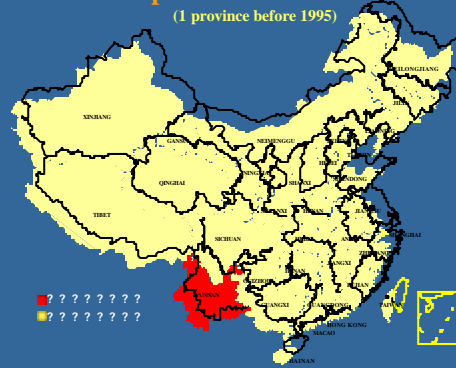


### Four Epidemics of HIV/AIDS in China

- Injecting drug users
- Former plasma donors
- Hetero-sexual
- Homo-/bi-sexual
- 



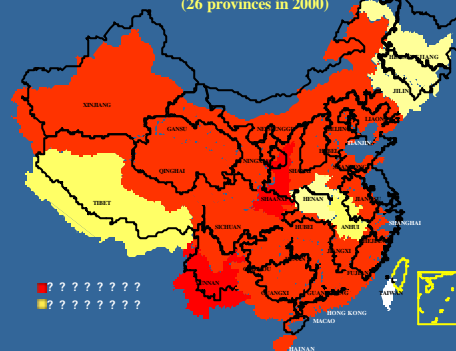
### Epidemic in IDUs -1 (1 province before 1995)

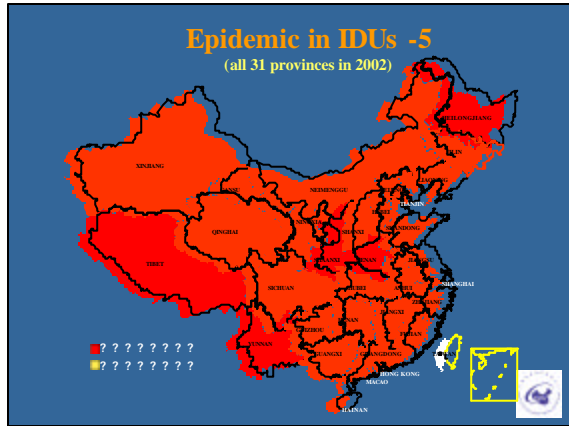
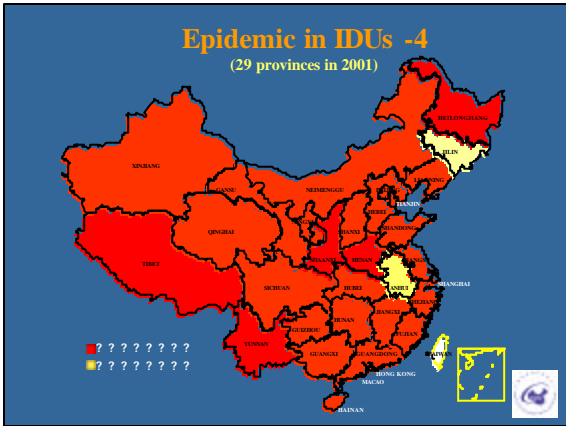


### Epidemic in IDUs -2 (3 provinces in 1995)



### Epidemic in IDUs -3 (26 provinces in 2000)



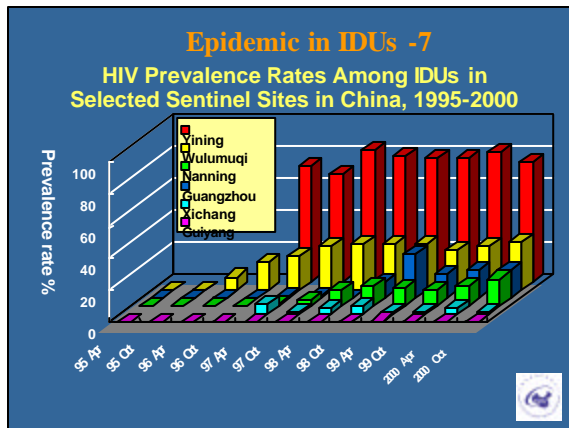


### Epidemic in IDUs -6

#### HIV Infection Rate in IDUs

#### 1995-2000


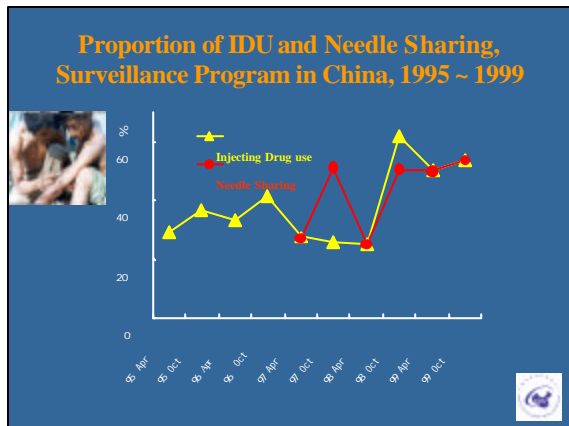
1995	1996	1997	1998	1999	2000
0.02	1.7	6.6	10.8	12.1	10.0



### Epidemic in IDUs -8

#### Number of Drug Users Increased in China

Year	# drug users
1990	70,000
1992	148,000
1993	250,000
1994	380,000
1995	520,000
1998	596,000
1999	681,000
2000	860,000
2001	901,000

### Epidemic in IDUs - 10

#### Estimation of Shared Injection / day

- Number of DUs: 901,000
- Number of IDUs: 450,500 (50%)
- Number of Sharer: 225,250 (50%)
- Number of shared injection per day:

**450,500 – 675,750**

Given 2-3 time/day



### IDU Epidemics-11

HIV infection among couples applying for marriage license in YiNing City (1997-2000.4)

year	Person examined	HIV( +)	HIV( %)
1997	755	13	1.72
1998	5200	37	0.71
1999	4562	60	1.32
2000.1-4	1218	14	1.15
<b>Total</b>	<b>11735</b>	<b>124</b>	<b>1.06</b>



### Epidemic in FPD - 1 HIV Infection Among Former Plasma Donors (FPD) in X County

Population	Number Tested	HIV( +)	%
FPD	210	19	9.1
Others	520	3	0.6
<b>Total</b>	<b>730</b>	<b>22</b>	<b>3.0</b>



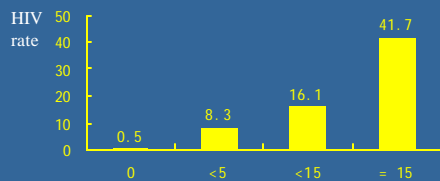
### Epidemic in FPD - 2 HIV Infection Among FPD in XY County

Population	Case	HIV( +)	%
FPD	88	15	17.0
Others	875	2	0.2
<b>Total</b>	<b>963</b>	<b>17</b>	<b>1.8</b>



### Epidemic in FPD - 2

#### Relation of HIV Infection and Frequency of Plasma donation in B County



Frequency of donation/per month



### Epidemic in Heterosexuals

- Sex work expanded widely in China
- Diverse level of sex workers
- High proportion of sex workers engaged in high-risky behaviors, particularly low class
- Increased HIV infection

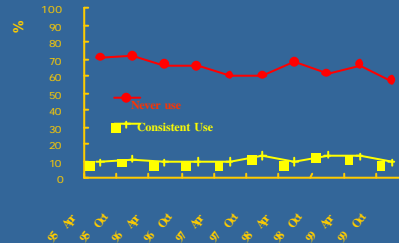


### HIV Infection Rate Sex Workers 1995-2000

1995	1996	1997	1998	1999	2000
0.02	0.02	0.3	0.4	0.8	1.32



### SEX WORKERS Condom Use Rate Among Prostitutes, Surveillance Program in China, 1995-1999



### Annual Reported STDs in China 1985-2000



### HIV Infection Rate in STD Patients 1995-2000

1995	1996	1997	1998	1999	2000
0.02	0.01	0.26	0.35	0.76	1.1



### Risk of Sexual Transmission

HIV Infected: 850,000  
 15 – 49 yrs: 94%  
 Male to Female ratio: 4:1

If single sexual partner:  
 479,400 HIV(+) vs 479,400 HIV(-)

If multiple sexual partner:  
 ???



### Epidemic in Homo-bisexual man

- The number of man involved are presumed large;
- Limited information showed HIV already got into this group, some with infection rate of more than 10%;
- Most homosexuals or bi-sexuals exist in marriage with a woman;
- Need more attention



## B. IMPACT



Her father  
infected HIV  
via IDU and  
passed to her  
mother, then  
her mother  
passed HIV to  
her;  
Father died, and  
mother run  
away, leave  
her orphan



## C. SIGNIFICANCE



## Significant Impact of Epidemic in China

- China has population size 1.3 billion, about 24% of total population in the world
- Tripling HIV infection from 0.065% to 0.2%, will add **1.7 million** infections
- Increase rate to 4%, will **have 52 million** infections, more than total infection in the world now



## Unique Opportunity in China

- Epidemic at early stages, overall rate is still low
- **Cost-efficient**, comparing with launch responses at epidemic of late stage
- Save **more lives** and **more resources** in the world



## D. STRATEGIES



## Five Year Action Plan

### Major effective intervention measures:

- Blood safety
- **Condom promotion**
- **Methadone maintenance**
- **Needle social marketing**
- Mass media campaign

Review existing laws and regulations, improve supportive law enforcement environment



## Five Year Action Plan

Increased financial support from central government for implementation of the 5-year action plan:

CNY¥ 1.25 billion for blood safety

CNY¥ 500 million for other control activities

**However, it still does not meet the needs of AIDS control activities**



## Interventions for IDUs

- Currently education in detoxification
- Few community programs
- **Needle social marketing is being piloted**
- **Methadone maintenance is going to be piloted**
- **How to scale up responses quickly ???**



### Interventions for SEX WORKERS

- Education in detention/re-education
- A few community outreach programs to entertainment establishments
  - Education
  - Condoms
  - STD cares
- How to scale up responses quickly???



### VCT

- Estimated actual infection **850,000**
- Reported **30,000**, 3.5%
- **820,000** infected, but remained unknown



### Treatment and Care

- Most of HIV infected unidentified
- Stigma and discrimination makes most infected persons inaccessible to whatever available treatment
- Need training on community-/home-based care
- \$\$ High price of anti-retro therapy
- Need training of using anti-retro therapy



### Priorities

- Scaling up effective primary prevention
- Voluntary HIV counseling and testing
- Care and treatment of infected persons
- Enhanced surveillance and epidemiology
- Training
- Blood Safety

