

The Economist/YouGov Poll

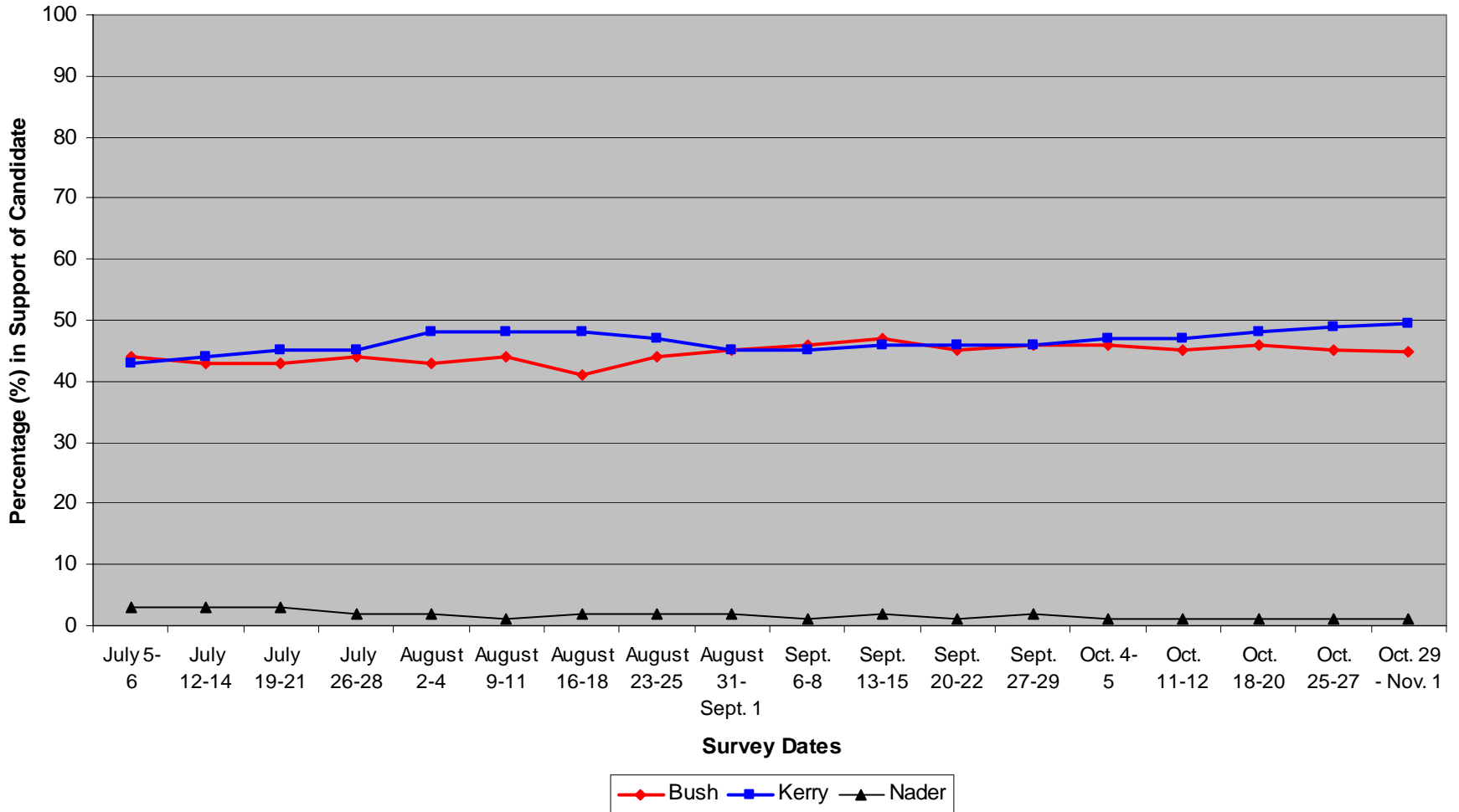


Morris Fiorina

Jon Krosnick

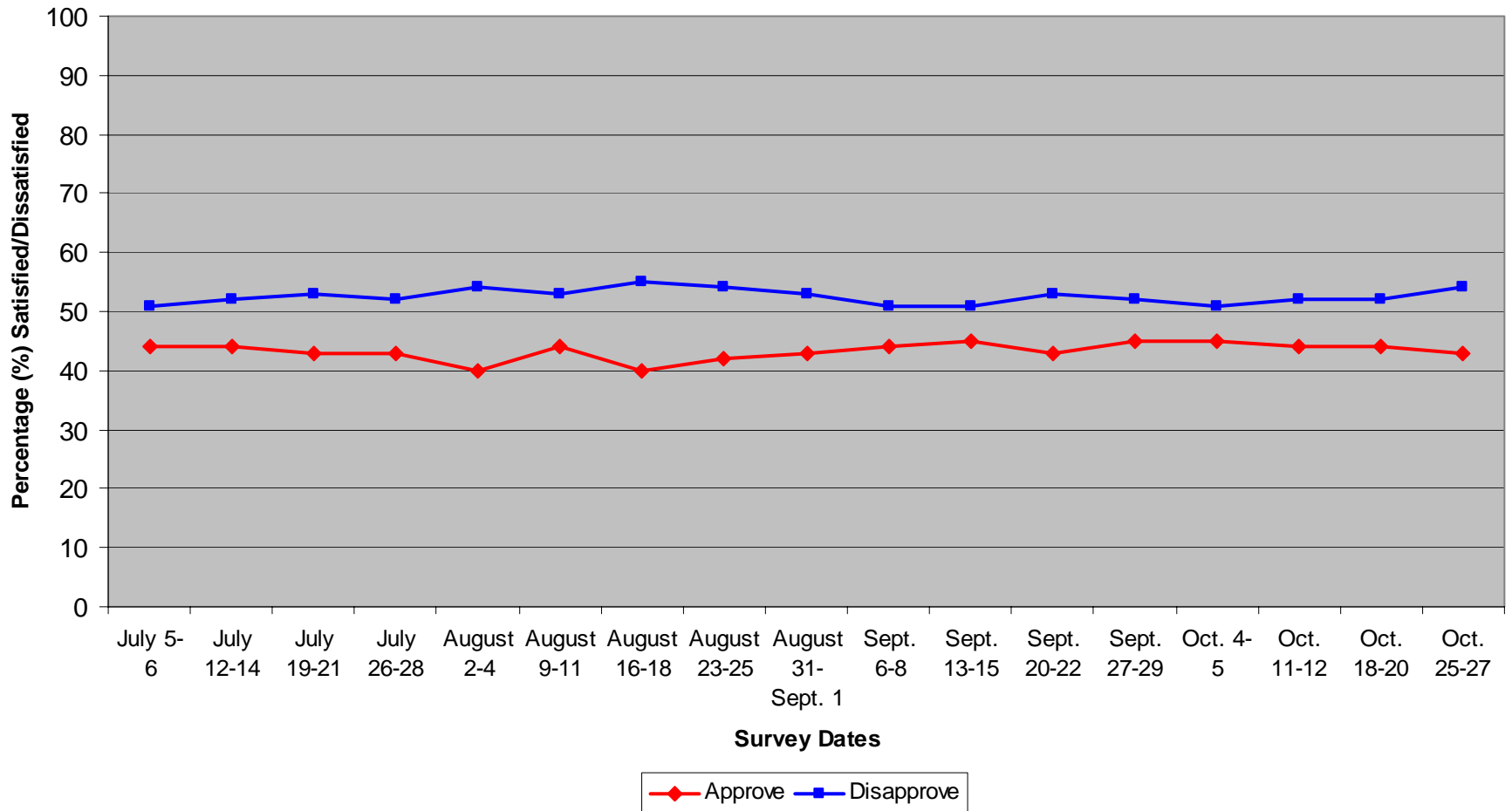
Stanford University

Suppose the election for President were being held TODAY. Who would you vote for? George W. Bush, the Republican; John F Kerry, the Democrat; Ralph Nader, an independent candidate, or someone else?



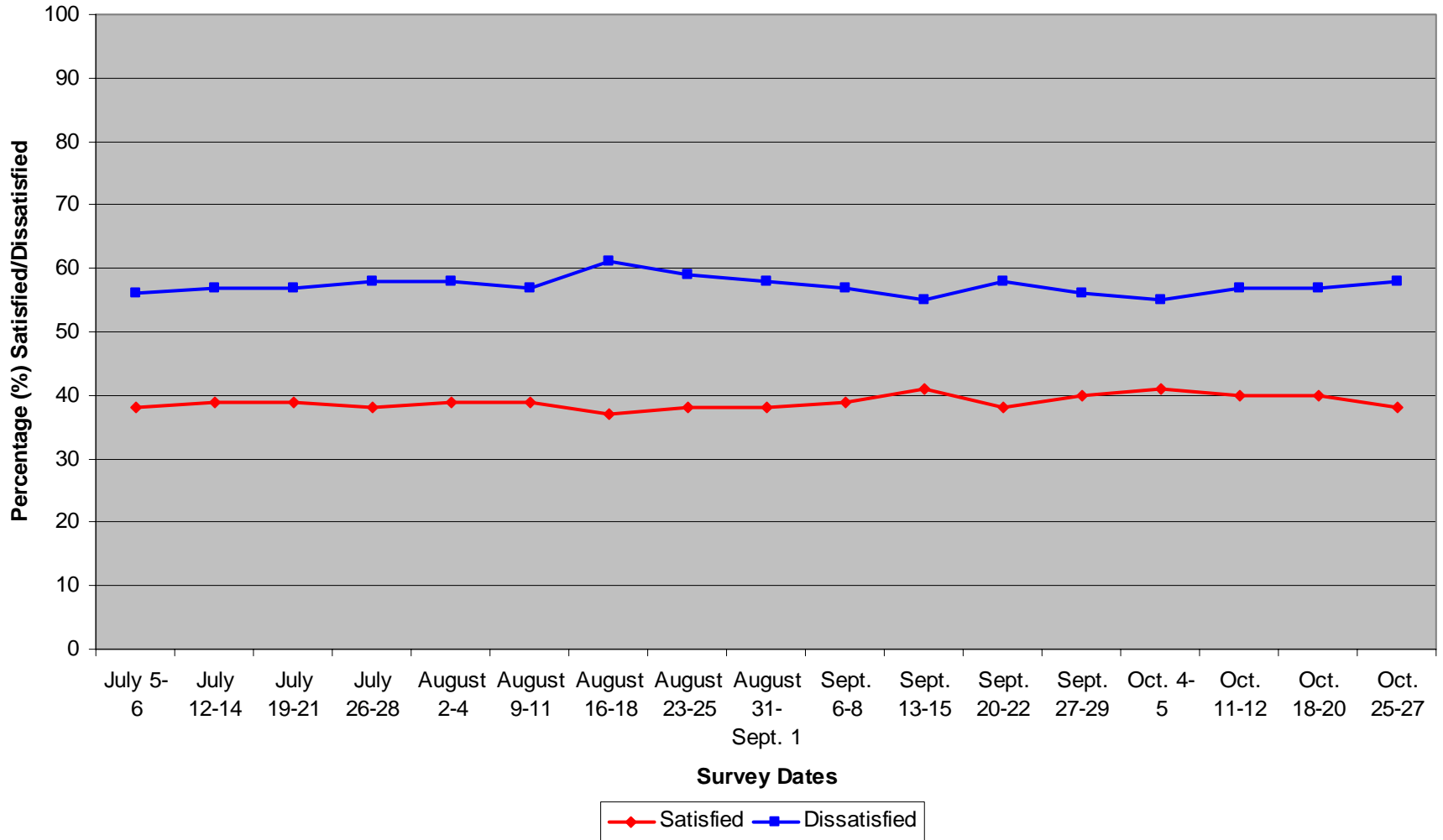
Source: Economist/YouGov poll. Sample: Respondents w ho are registered to vote.

Do you approve or disapprove of the way President George W. Bush is handling his job as President?



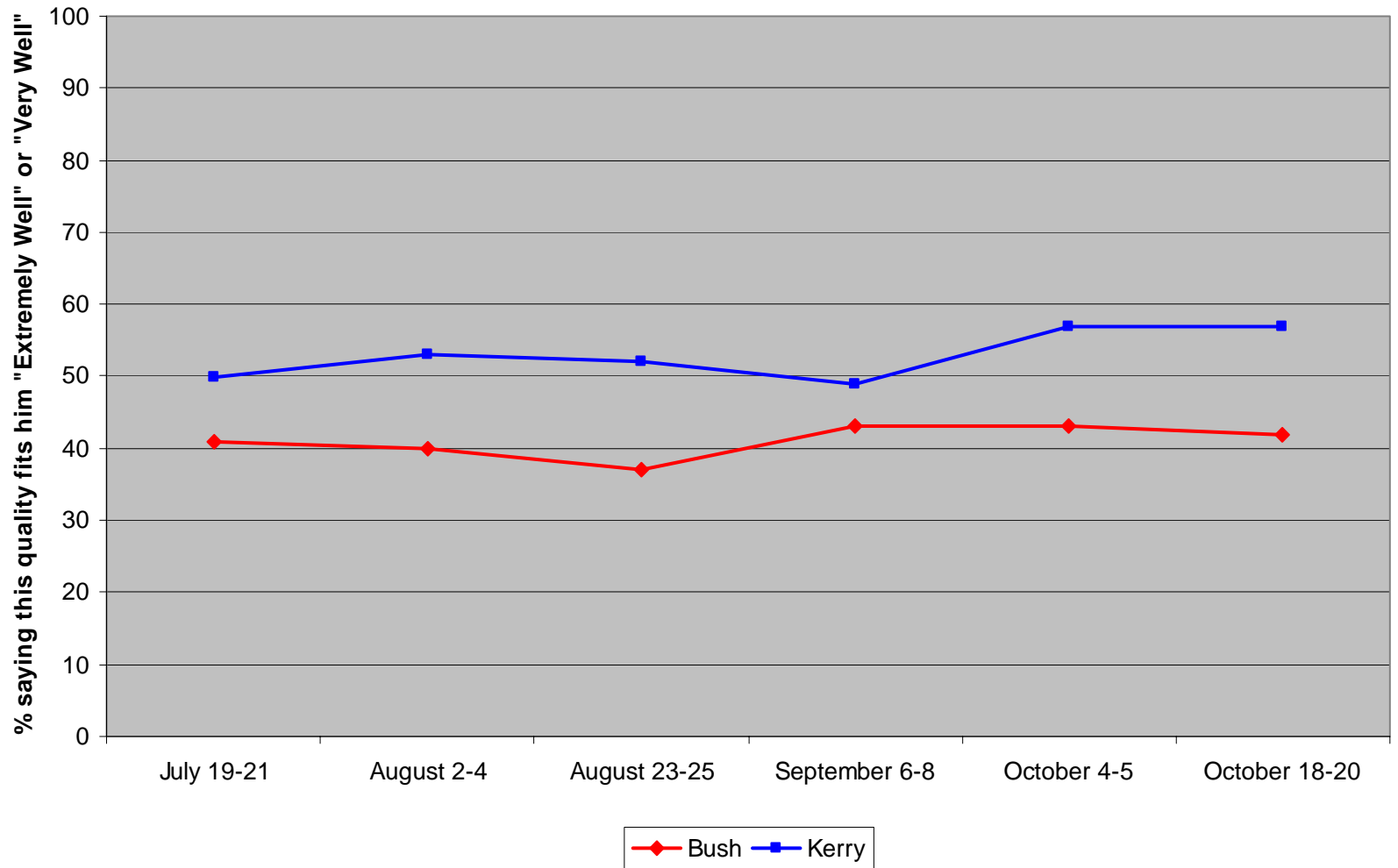
Source: Economist/YouGov Poll. Sample: Respondents who are registered to vote

In general, are you satisfied or dissatisfied with the way things are going in the United States at this time?



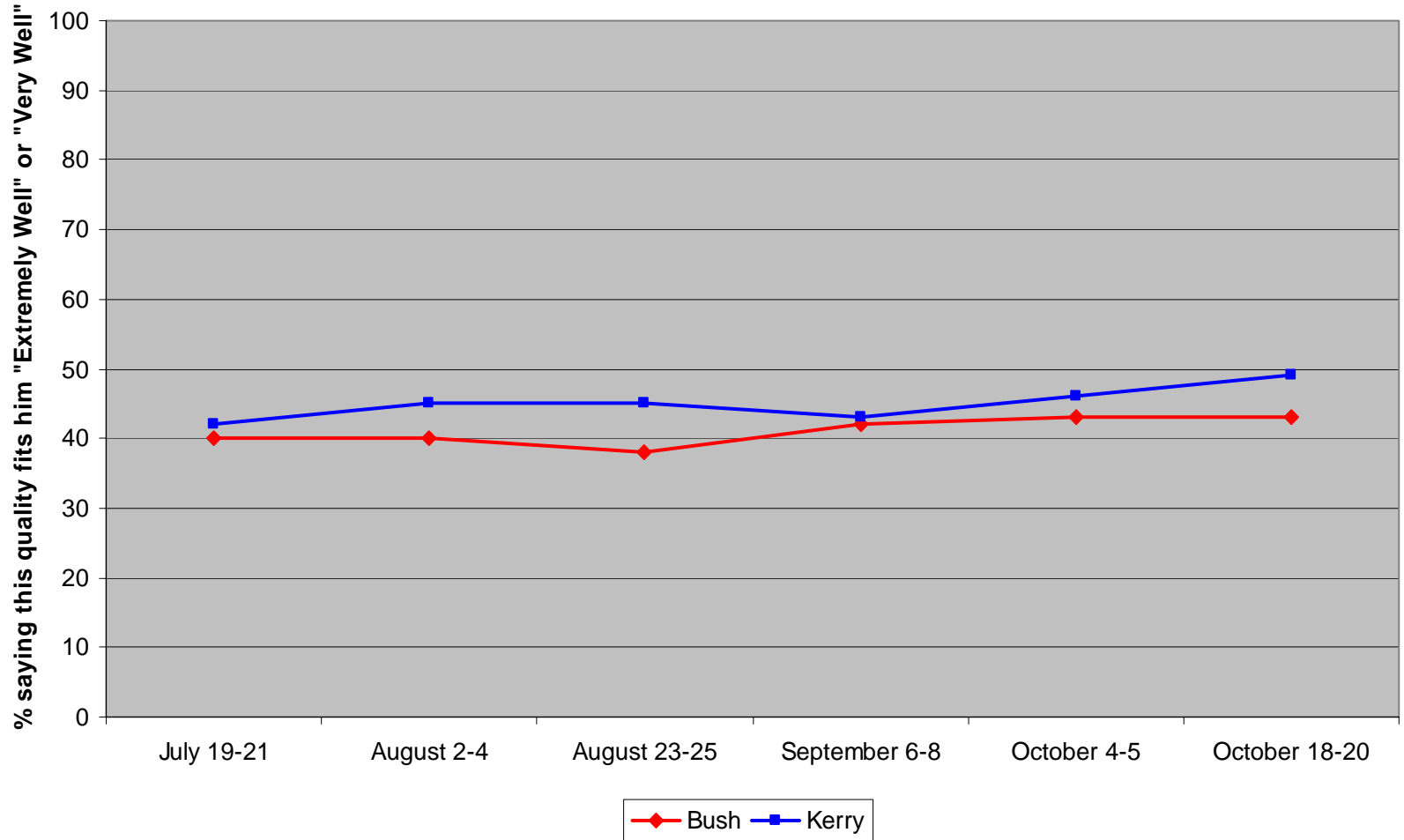
Source: Economist/YouGov Poll. Sample: Respondents who are registered to vote

Candidate Trait Assessment: "He is Intelligent"



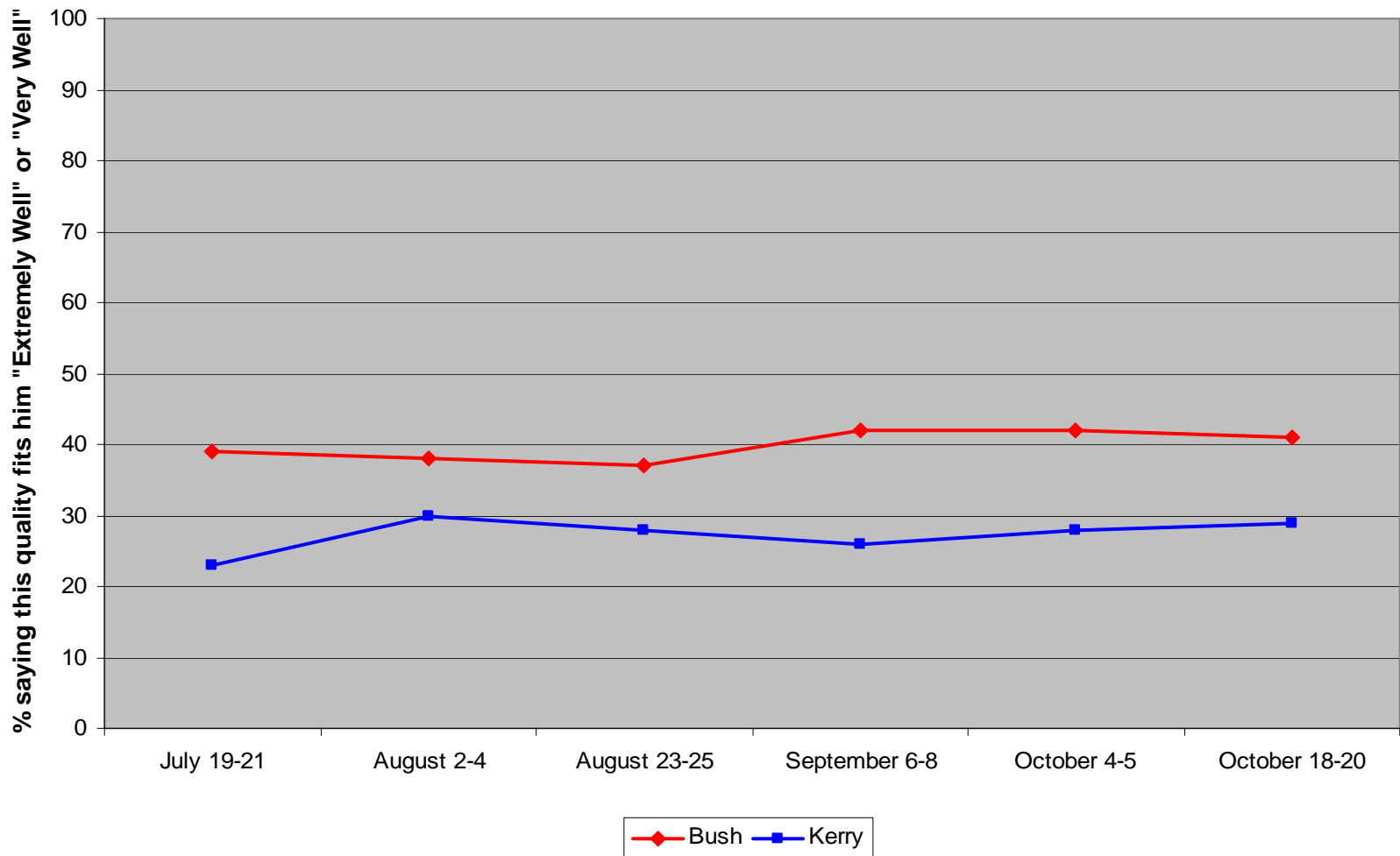
Notes: Percentage of respondents answering "Extremely Well" and "Very Well" when assessing the candidate traits. Sample: Respondents who are registered to vote

Candidate Trait Assessment: "He is Knowledgeable"



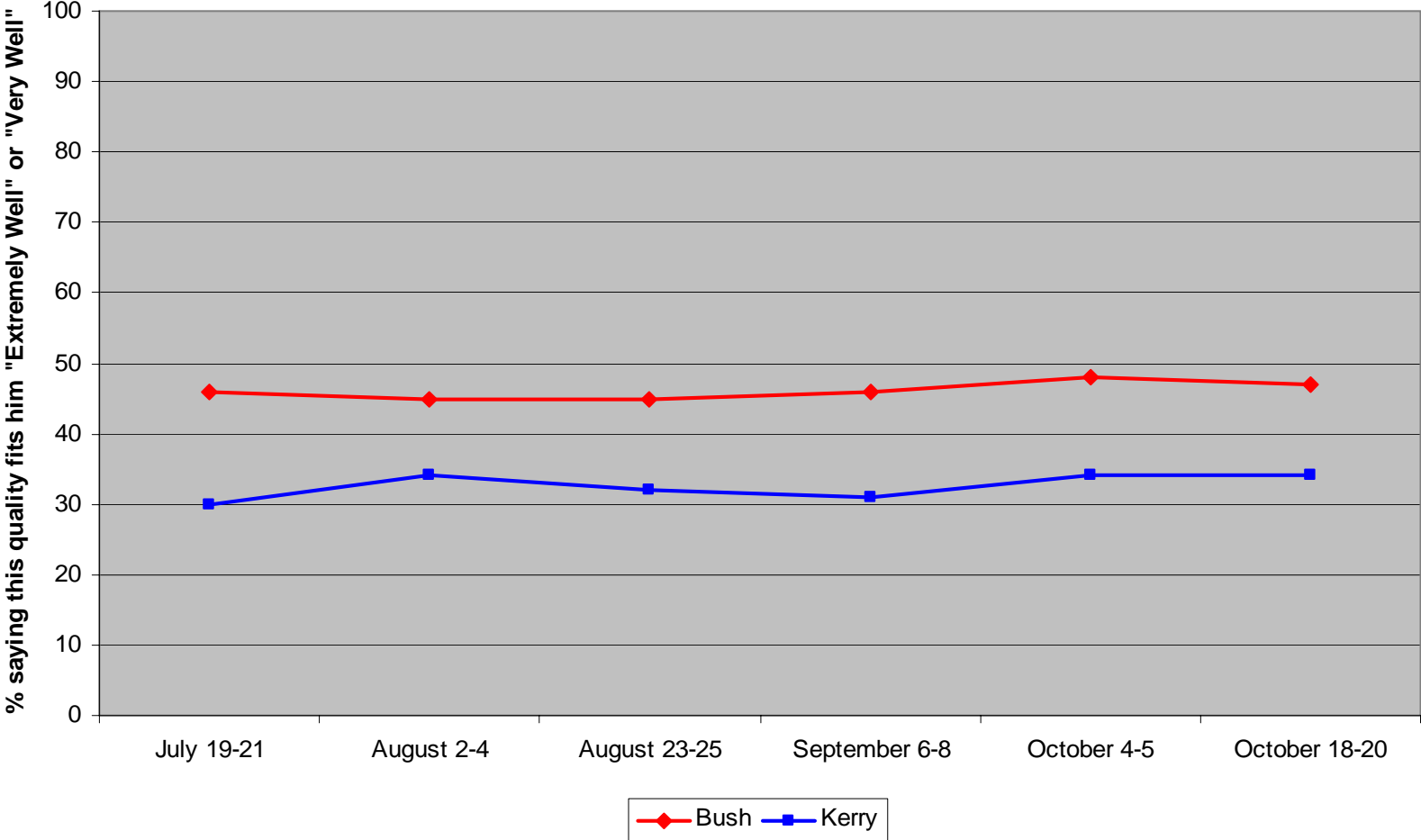
Notes: Percentage of respondents answering "Extremely Well" and "Very Well" when assessing the candidate traits. Sample: Respondents who are

Candidate Trait Assessment: "He is Trustworthy"



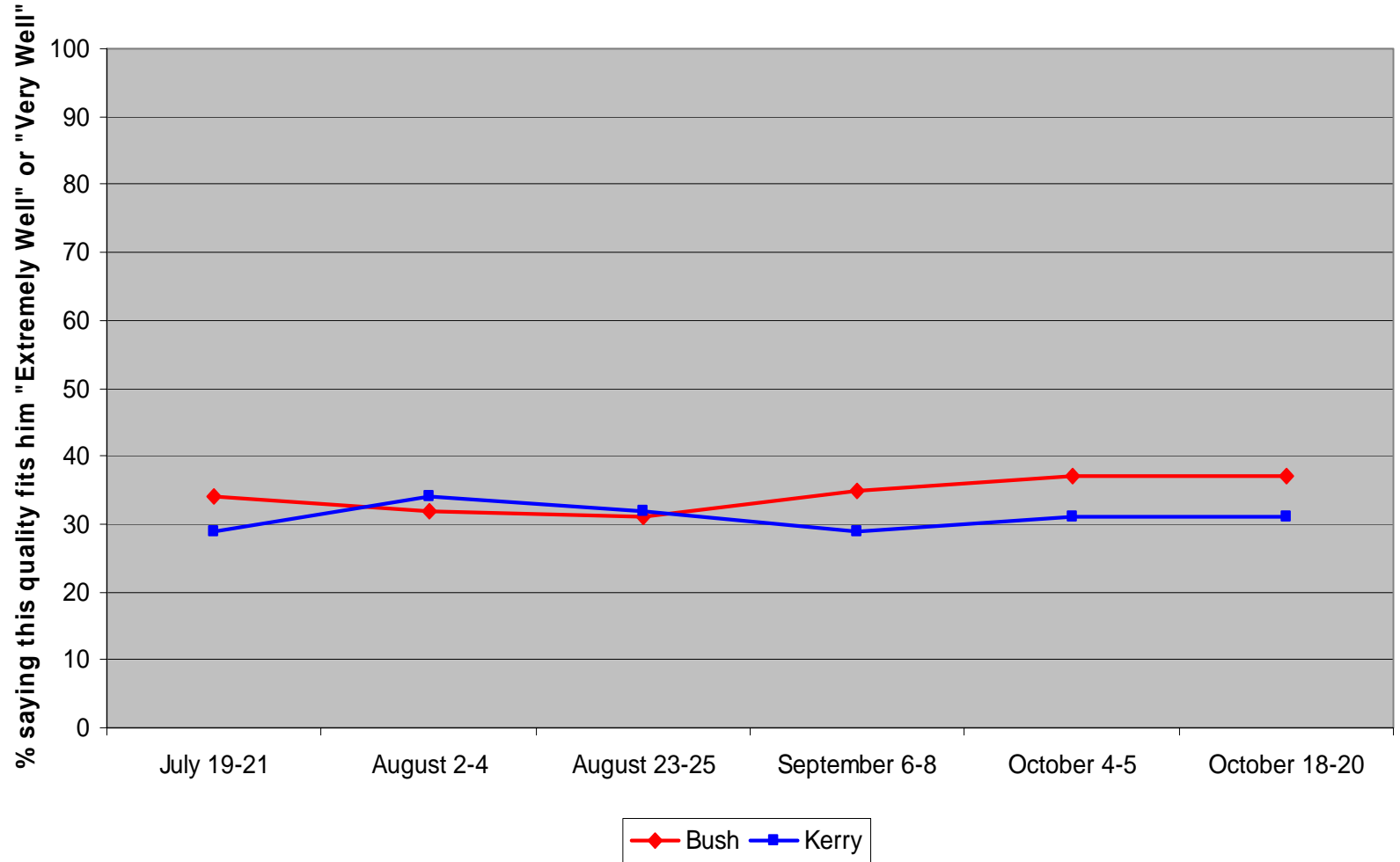
Notes: Percentage of respondents answering "Extremely Well" and "Very Well" when assessing the candidate traits. Sample: Respondents who are registered to vote

Candidate Trait Assessment: "He is Moral"



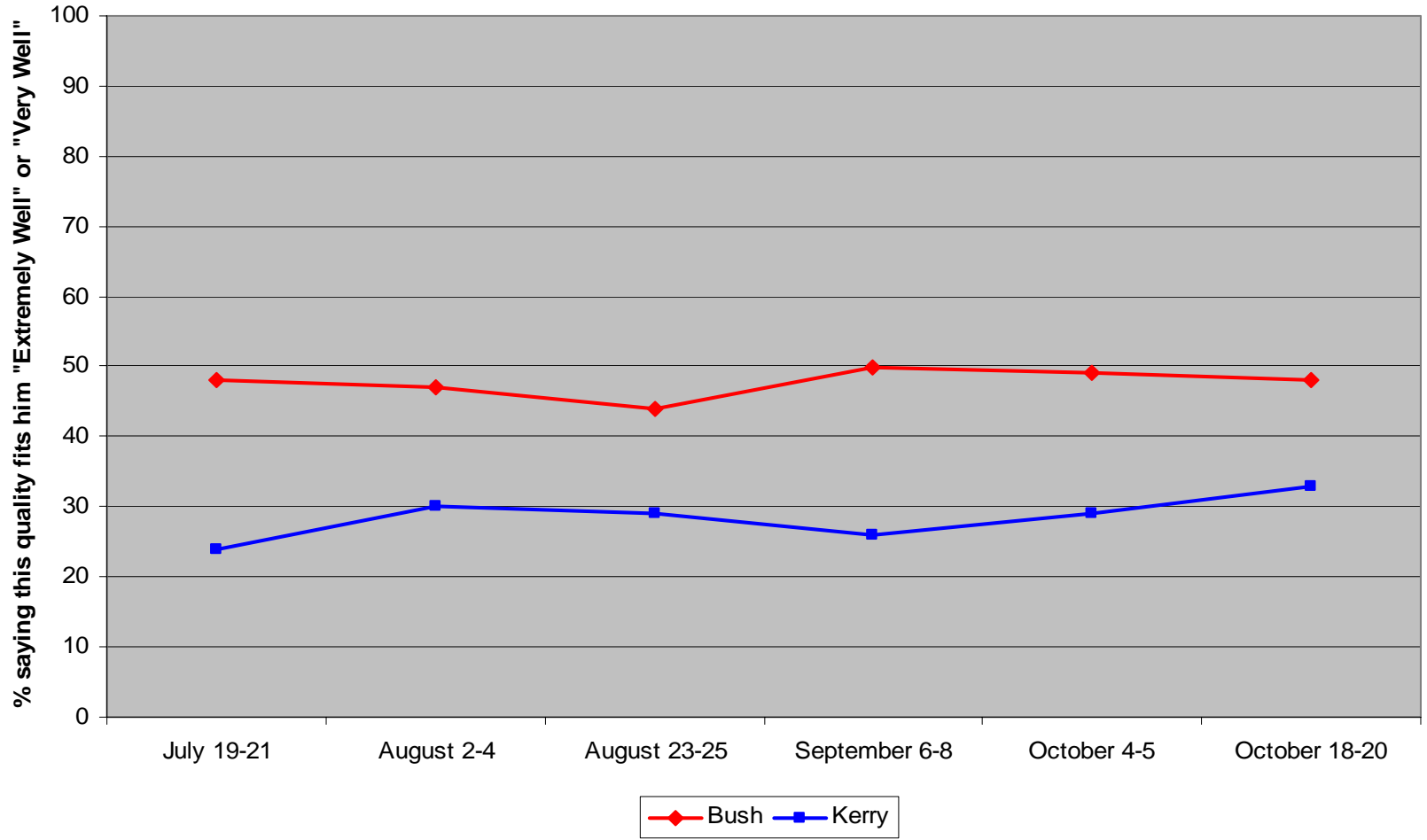
Notes: Percentage of respondents answering "Extremely Well" and "Very Well" when assessing the candidate traits. Sample: Respondents who are registered to

Candidate Trait Assessment: "He Cares About People Like Me"



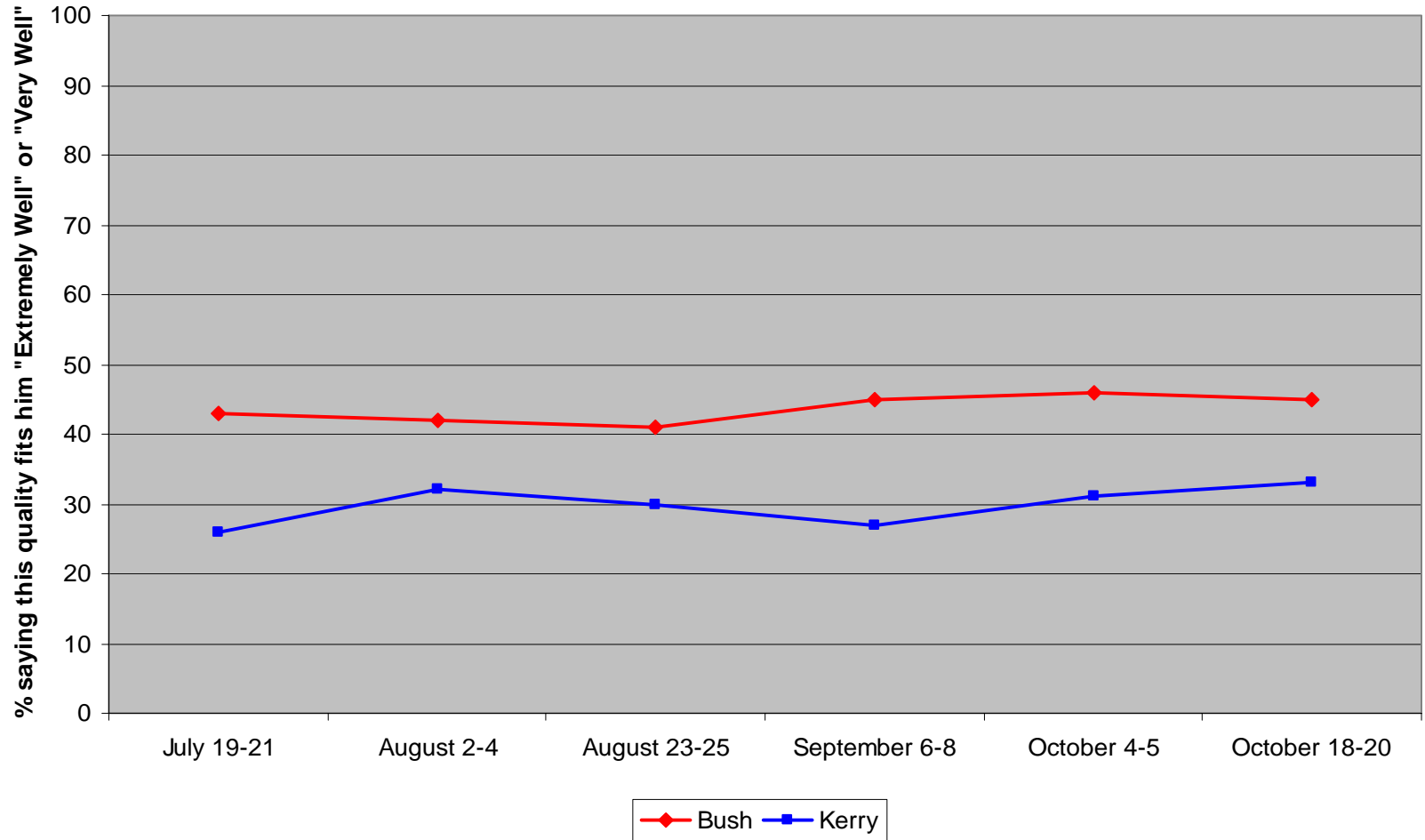
Notes: Percentage of respondents answering "Extremely Well" and "Very Well" when assessing the candidate traits. Sample: Respondents who are

Candidate Trait Assessment: "He is Tough"



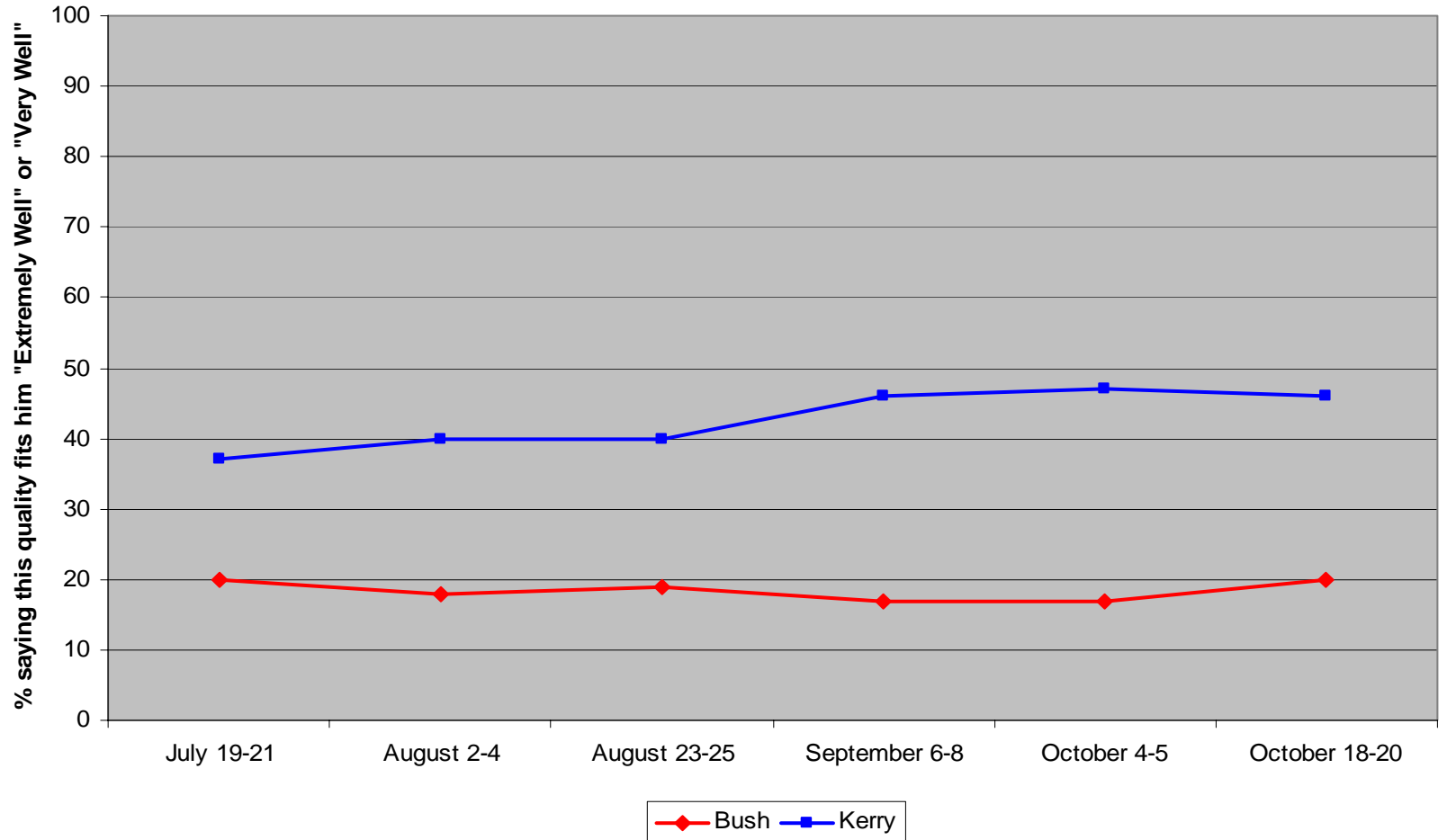
Notes: Percentage of respondents answering "Extremely Well" and "Very Well" when assessing the candidate traits. Sample: Respondents who are registered to

Candidate Trait Assessment: "He is a Strong Leader"



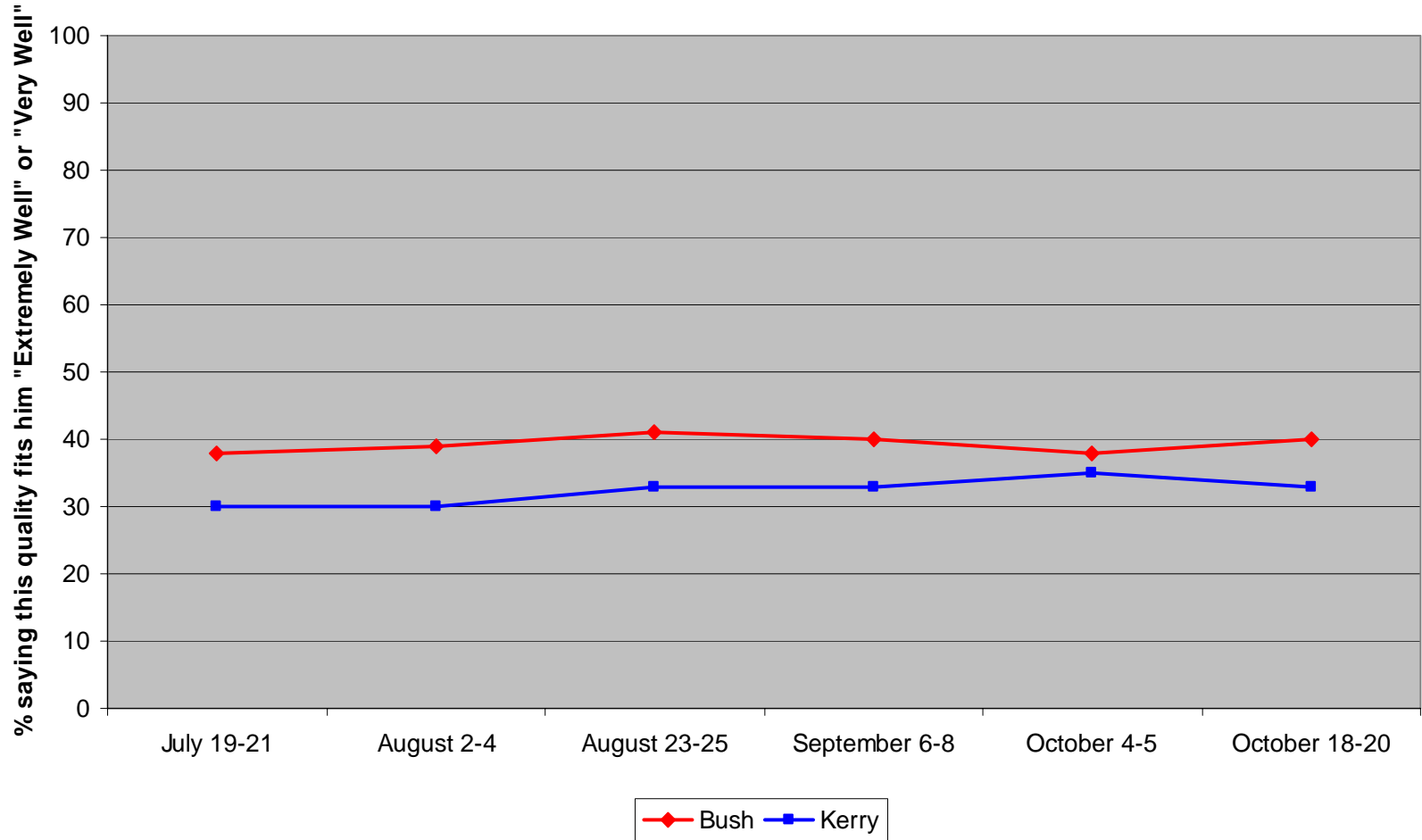
Notes: Percentage of respondents answering "Extremely Well" and "Very Well" when assessing the candidate traits. Sample: Respondents who are registered to vote.

Candidate Trait Assessment: "He Flip-Flops on the Issues"



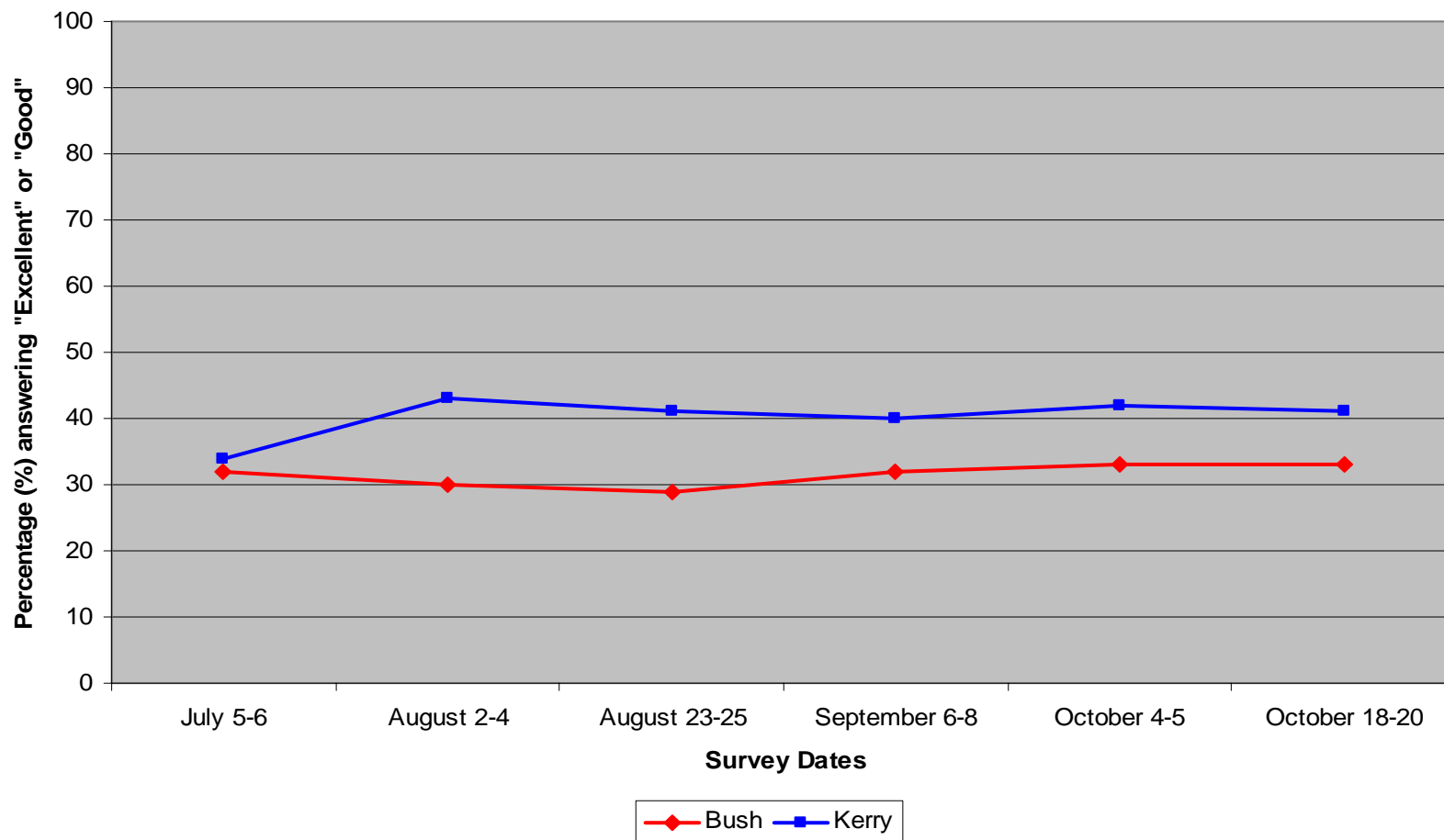
Notes: Percentage of respondents answering "Extremely Well" and "Very Well" when assessing the candidate traits. Sample: Respondents who are registered to vote

Candidate Trait Assessment: "He is Too Close to Special Interests"



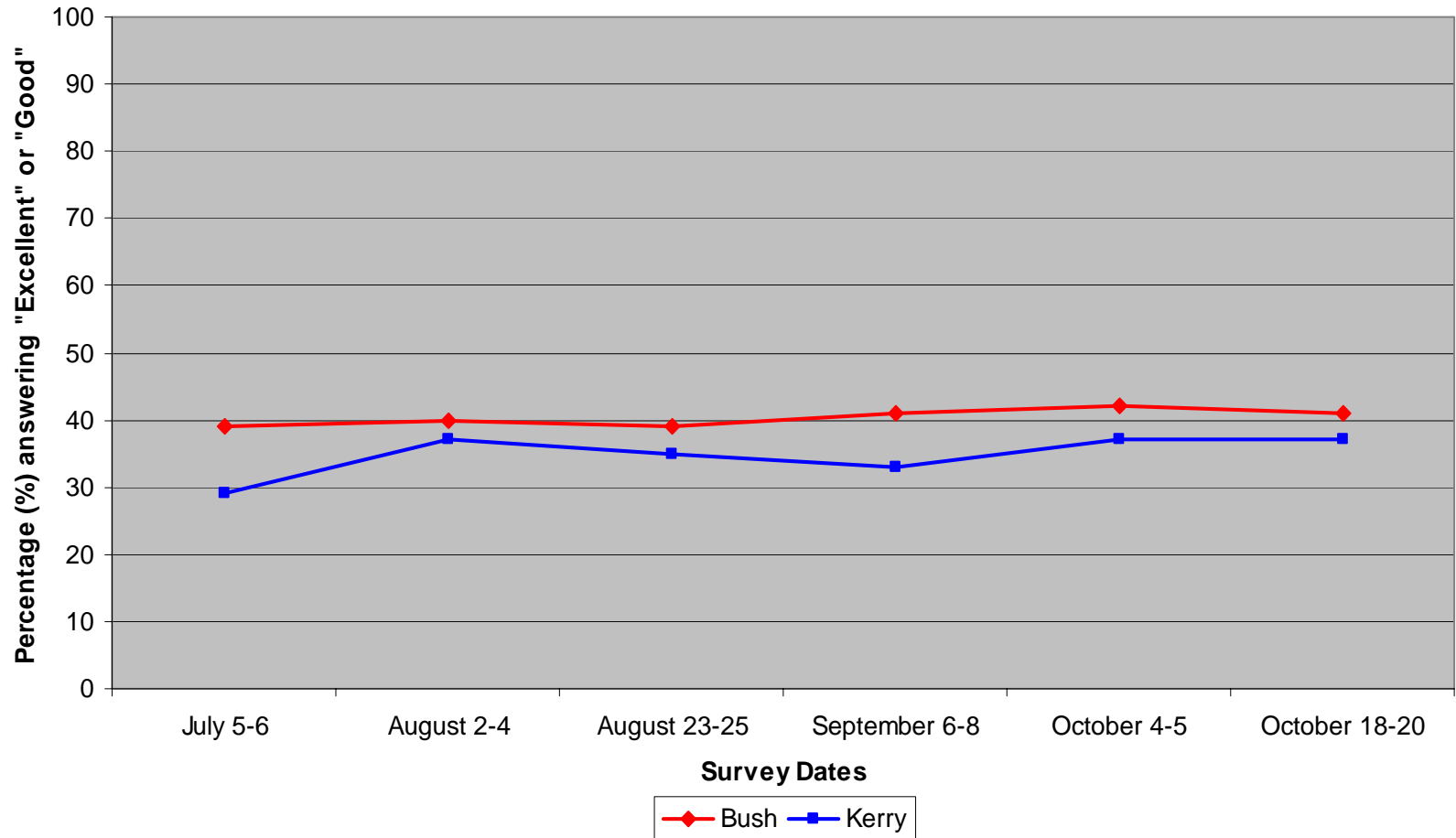
Notes: Percentage of respondents answering "Extremely Well" and "Very Well" when assessing the candidate traits. Sample: Respondents who are registered to vote

How do you think George W Bush/John F. Kerry would handle "the environment" over the next four years if he is re-elected President on November 2nd?



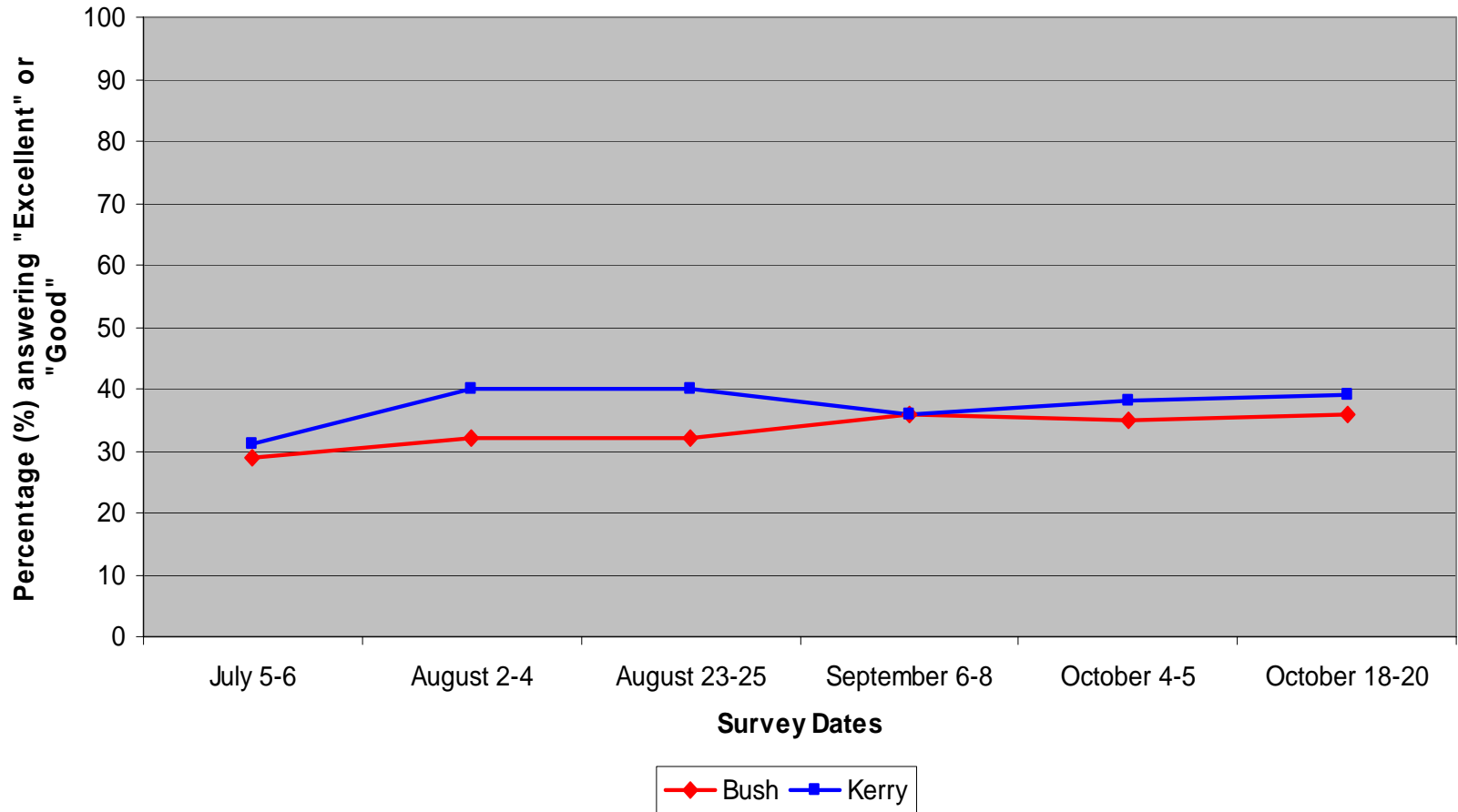
Notes: Percentage of respondents answering "Excellent" and "Good" when assessing the candidate traits. Sample: Respondents who are registered to vote

How do you think George W Bush/John F. Kerry would handle "the economy" over the next four years if he is re-elected/elected President on November 2nd?



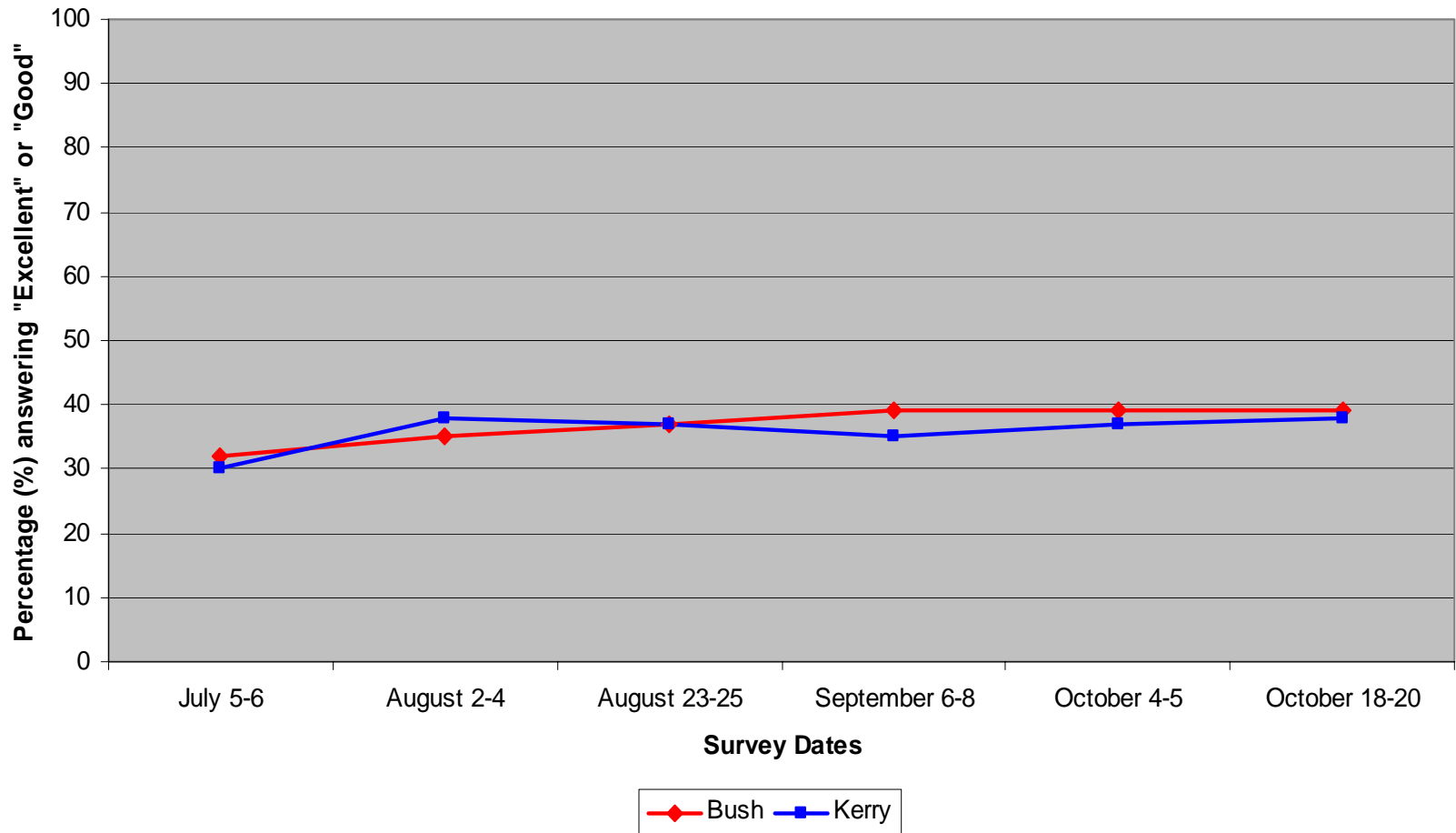
Notes: Percentage of respondents answering "Excellent" or "Good" when assessing the candidate traits. Sample: Respondents who are registered to vote

How do you think George W Bush/John F. Kerry would handle "health insurance in America" over the next four years if he is re-elected President on November 2nd?



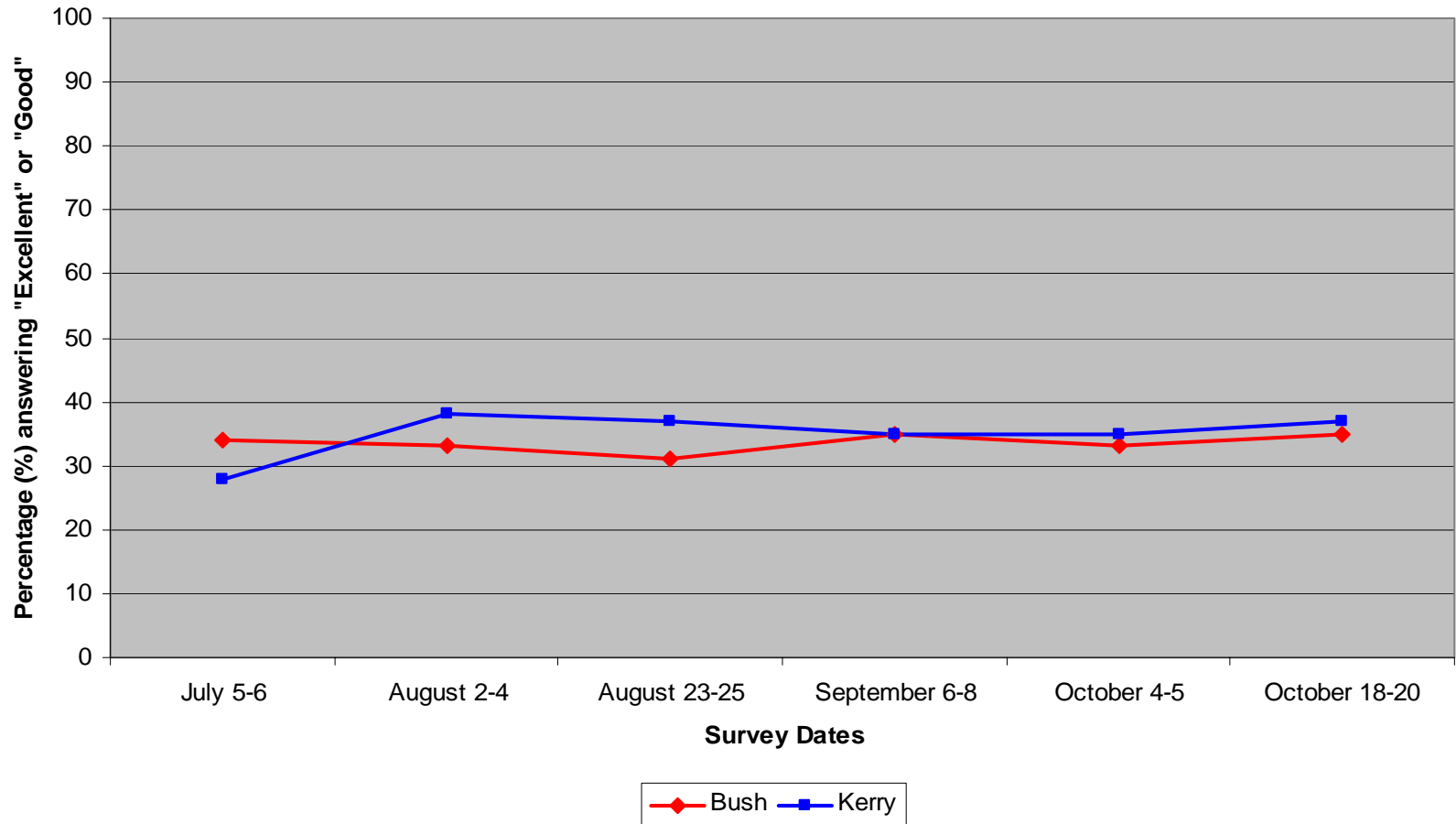
Notes: Percentage of respondents answering "Excellent" and "Good" when assessing the candidate traits. Sample: Respondents who are registered to vote

How do you think George W Bush/John F. Kerry would handle "public education" over the next four years if he is re-elected President on November 2nd?



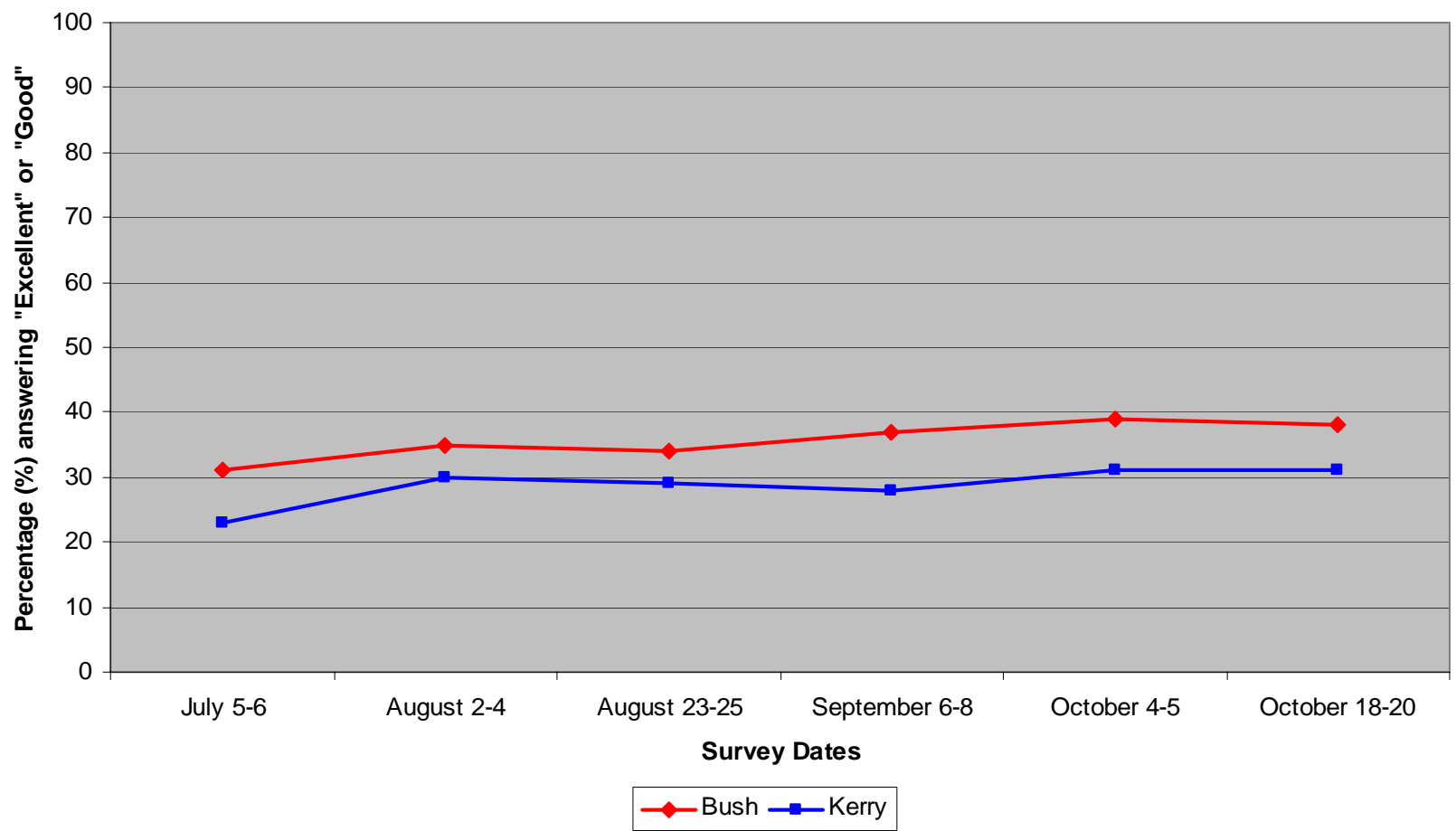
Notes: Percentage of respondents answering "Excellent" and "Good" when assessing the candidate traits. Sample: Respondents who are registered to vote

How do you think George W Bush/John F. Kerry would handle "race relations" over the next four years if he is re-elected President on November 2nd?



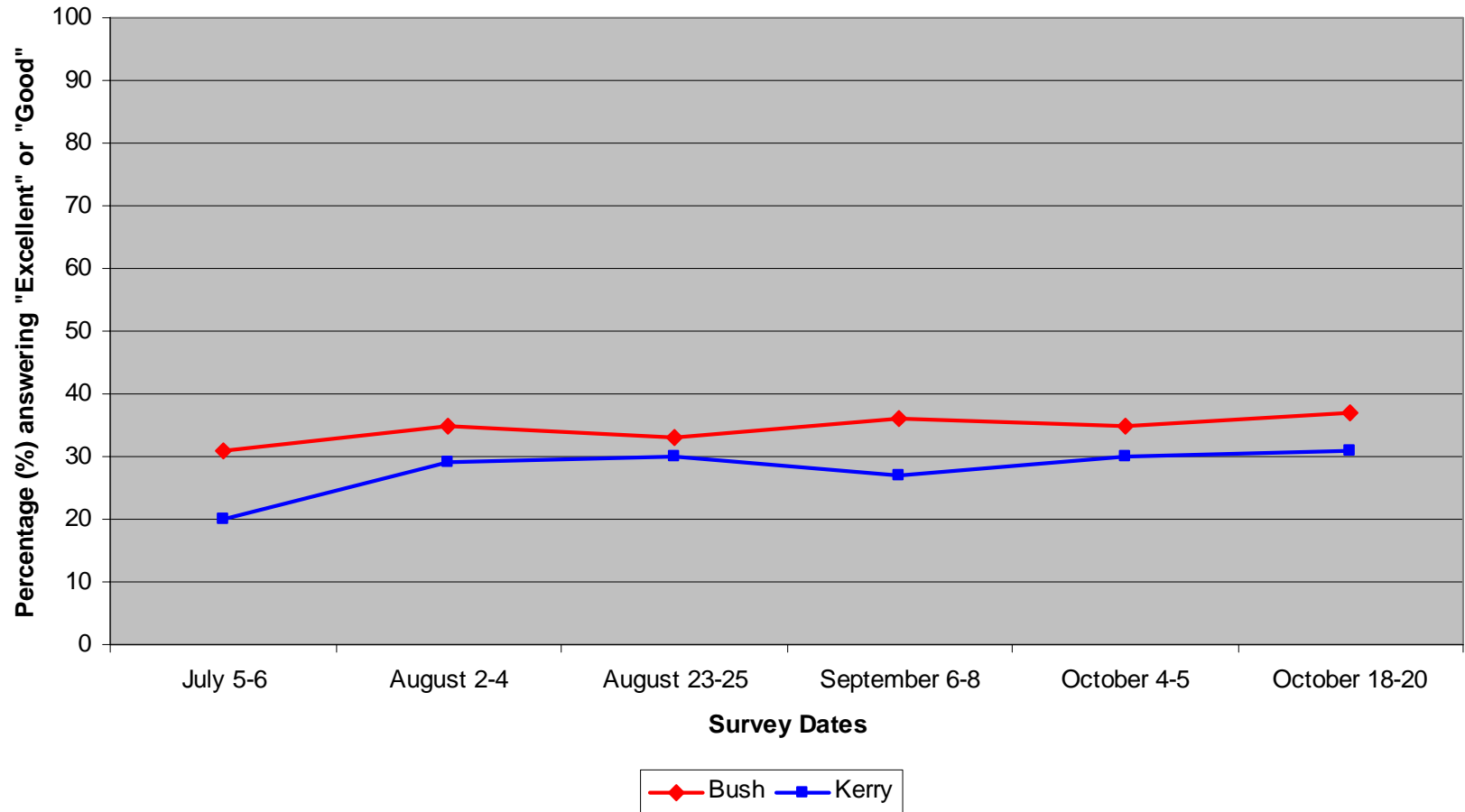
Notes: Percentage of respondents answering "Excellent" and "Good" when assessing the candidate traits. Sample: Respondents who are registered to vote

How do you think George W Bush/John F. Kerry would handle "taxes" over the next four years if he is re-elected President on November 2nd?



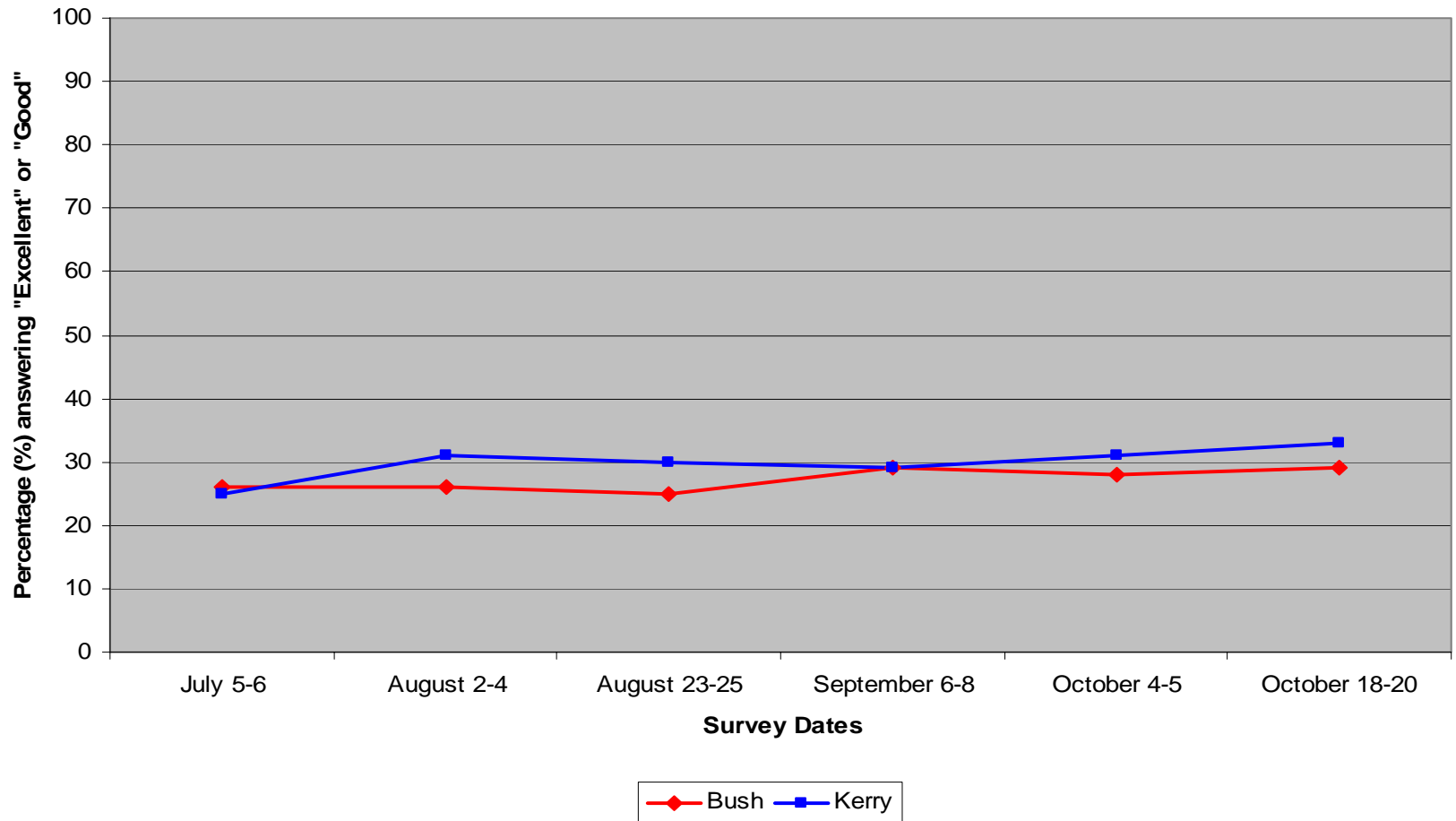
Notes: Percentage of respondents answering "Excellent" and "Good" when assessing the candidate traits. Sample: Respondents who are registered to vote

How do you think George W Bush/John F. Kerry would handle "crime" over the next four years if he is re-elected President on November 2nd?



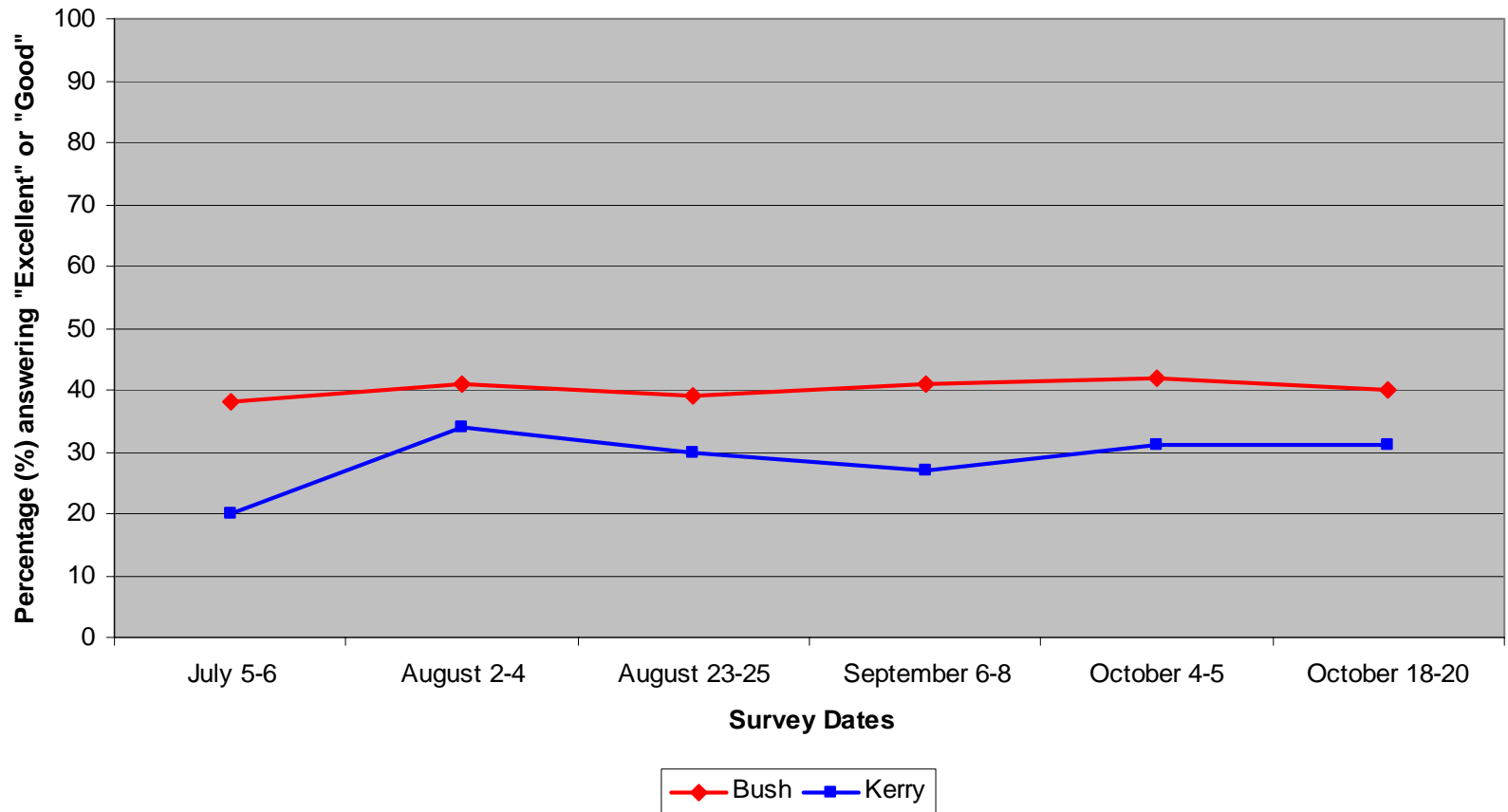
Notes: Percentage of respondents answering "Excellent" and "Good" when assessing the candidate traits. Sample: Respondents who are registered to vote

How do you think George W Bush/John F. Kerry would handle "the federal budget deficit" over the next four years if he is re-elected President on November 2nd?



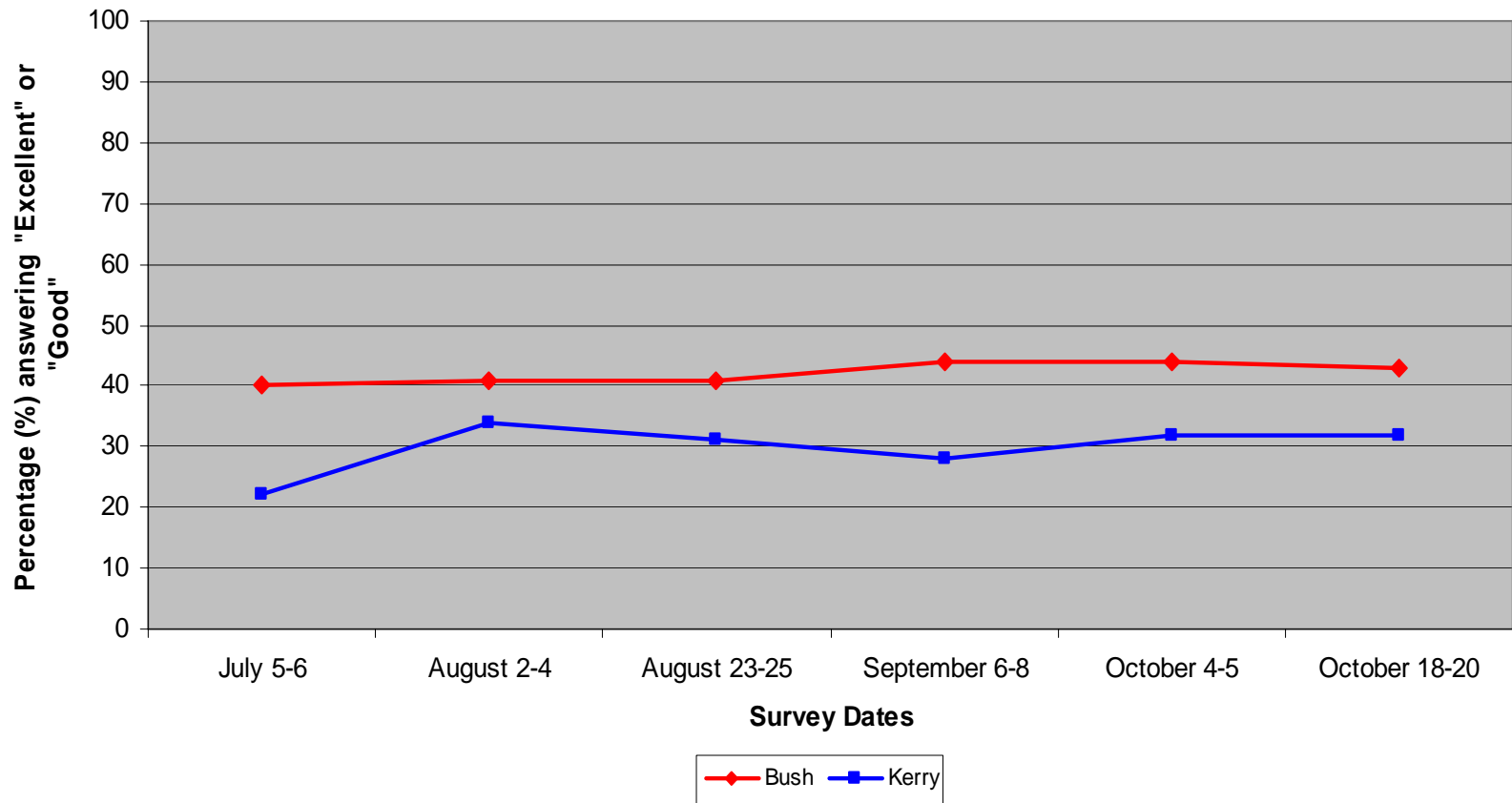
Notes: Percentage of respondents answering "Excellent" and "Good" when assessing the candidate traits. Sample: Respondents who are registered to vote

How do you think George W Bush/John F. Kerry would handle "the conduct of the war in Iraq" over the next four years if he is re-elected President on November 2nd?



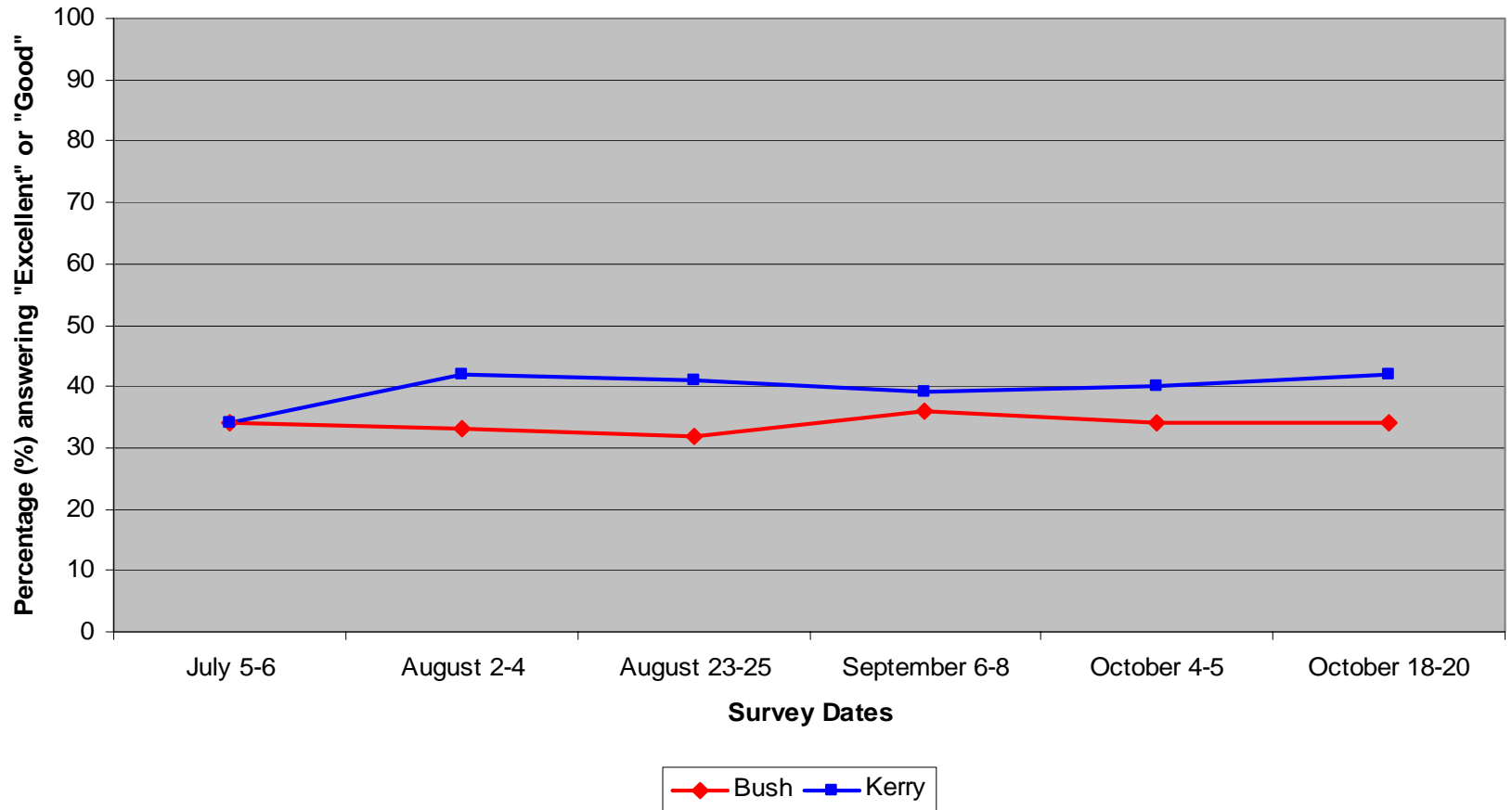
Notes: Percentage of respondents answering "Excellent" and "Good" when assessing the candidate traits. Sample: Respondents who are registered to vote

How do you think George W Bush/John F. Kerry would handle "the conduct of the war on terrorism" over the next four years if he is re-elected President on November 2nd?



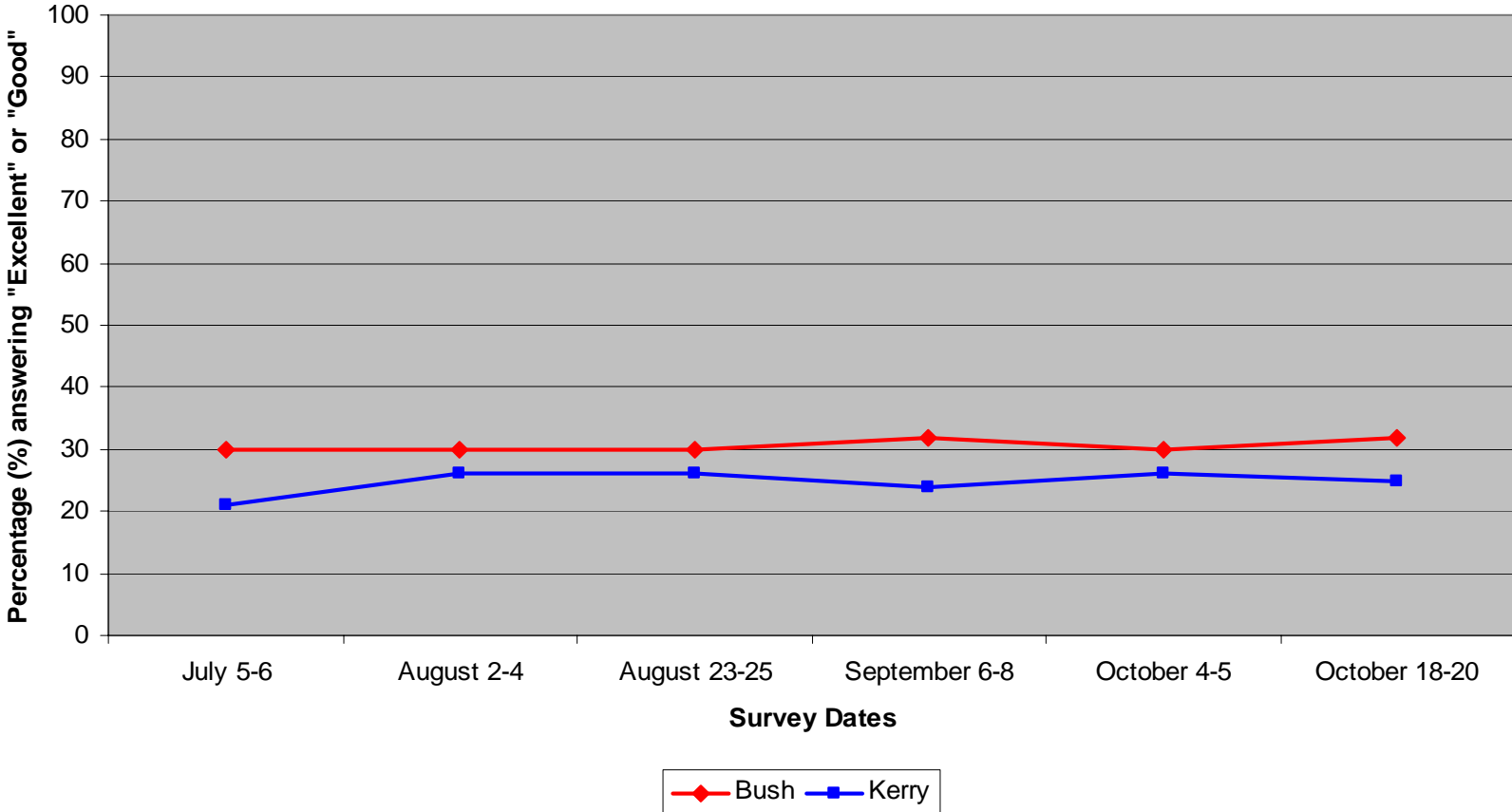
Notes: Percentage of respondents answering "Excellent" and "Good" when assessing the candidate traits. Sample: Respondents who are registered to vote

How do you think George W Bush/John F. Kerry would handle "relations with America's allies around the world" over the next four years if he is re-elected President on November 2nd?



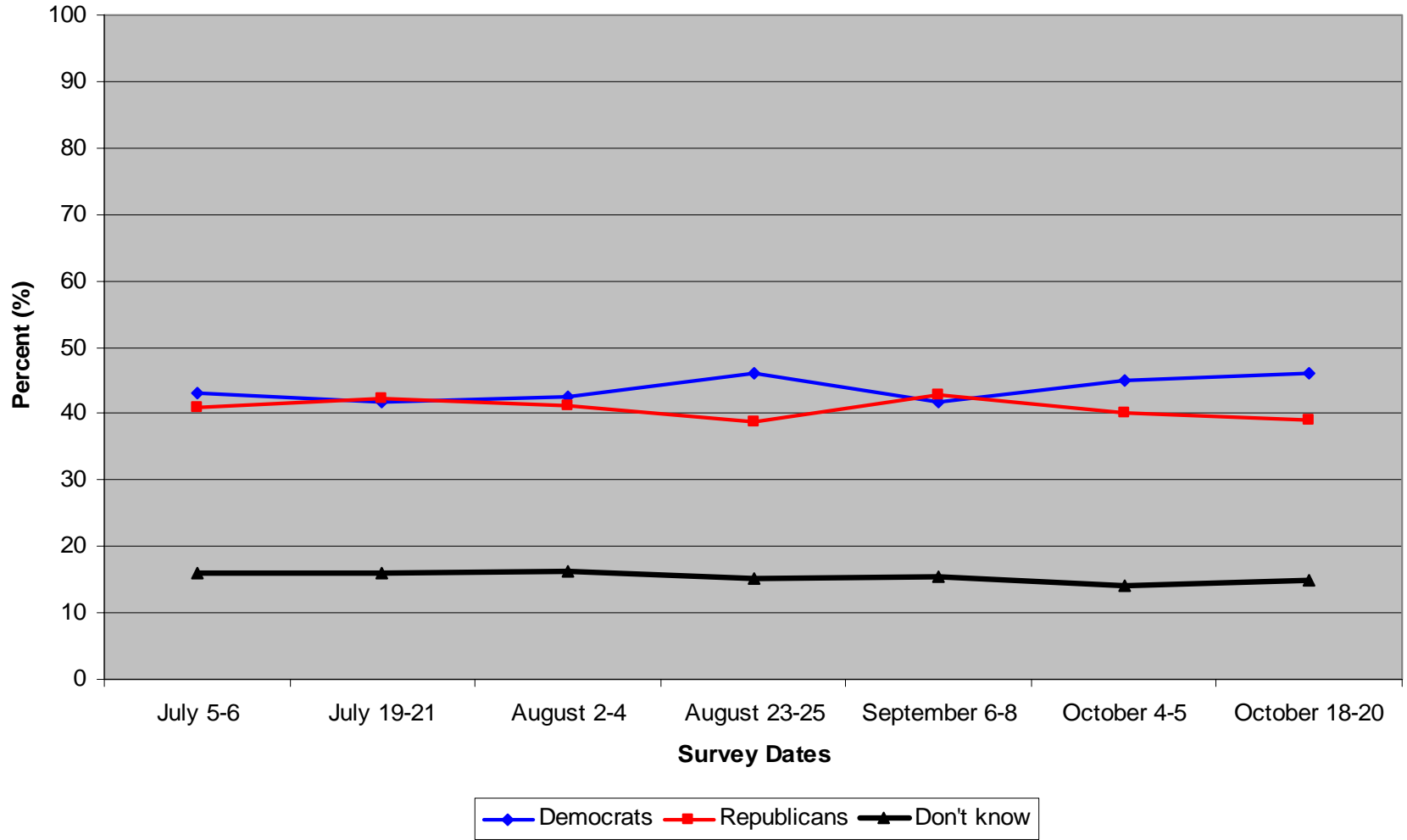
Notes: Percentage of respondents answering "Excellent" and "Good" when assessing the candidate traits. Sample: Respondents who are registered to vote

How do you think George W Bush/John F. Kerry would handle "marriage between people of the same sex" over the next four years if he is re-elected President on November 2nd?



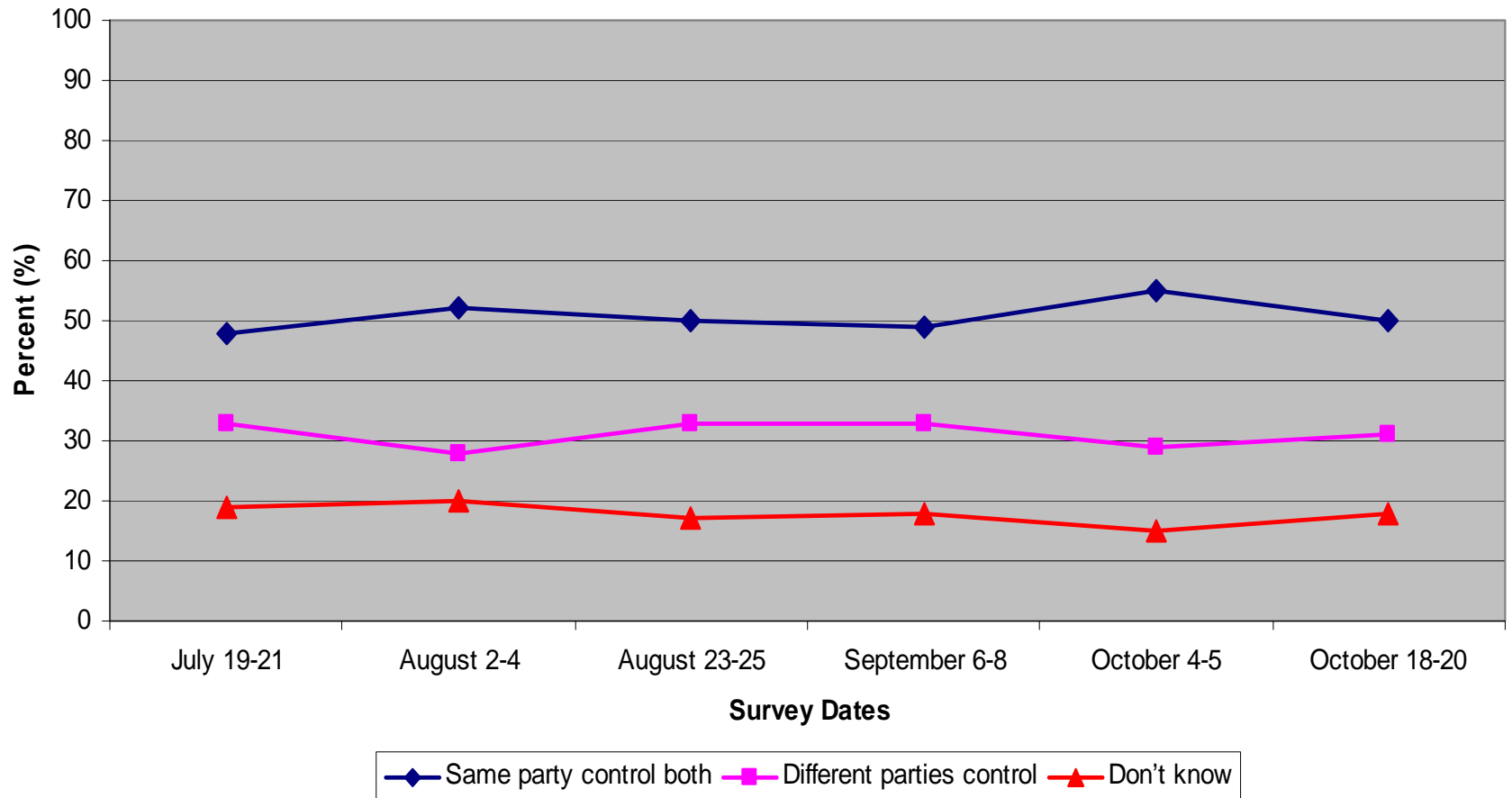
Notes: Percentage of respondents answering "Excellent" and "Good" when assessing the candidate traits. Sample: Respondents who are registered to vote

Who would you prefer to be in control of the Congress after the next election?



Source: Economist/YouGov poll. Sample: Respondents who are registered to vote

In general, do you think it is better for the same political party to control both the Congress and the Presidency, so they can work together closely, or do you think it is better to have different political parties controlling the Congress and the Presidency, to prevent either one from going to far?



Source: Economist/YouGov poll. Sample: Respondents who are registered to vote