

---

**Partnerships in Action: engaging all partners to contribute to effective responses to TB/HIV and MDR epidemics.**

**which challenges are being addressed with the partnering approach: Country perspective – Brazil**

**Maria Cristina Boaretto  
Ministry of Health  
Brazil**

39th Union World Conference on Lung Health, 16 to 20 October

# BRASIL





39th Union World Conference on Lung Health, 16 to 20 October

# General Information



8.500.000 km<sup>2</sup>

189.000.000 people

80.000 TB cases per year

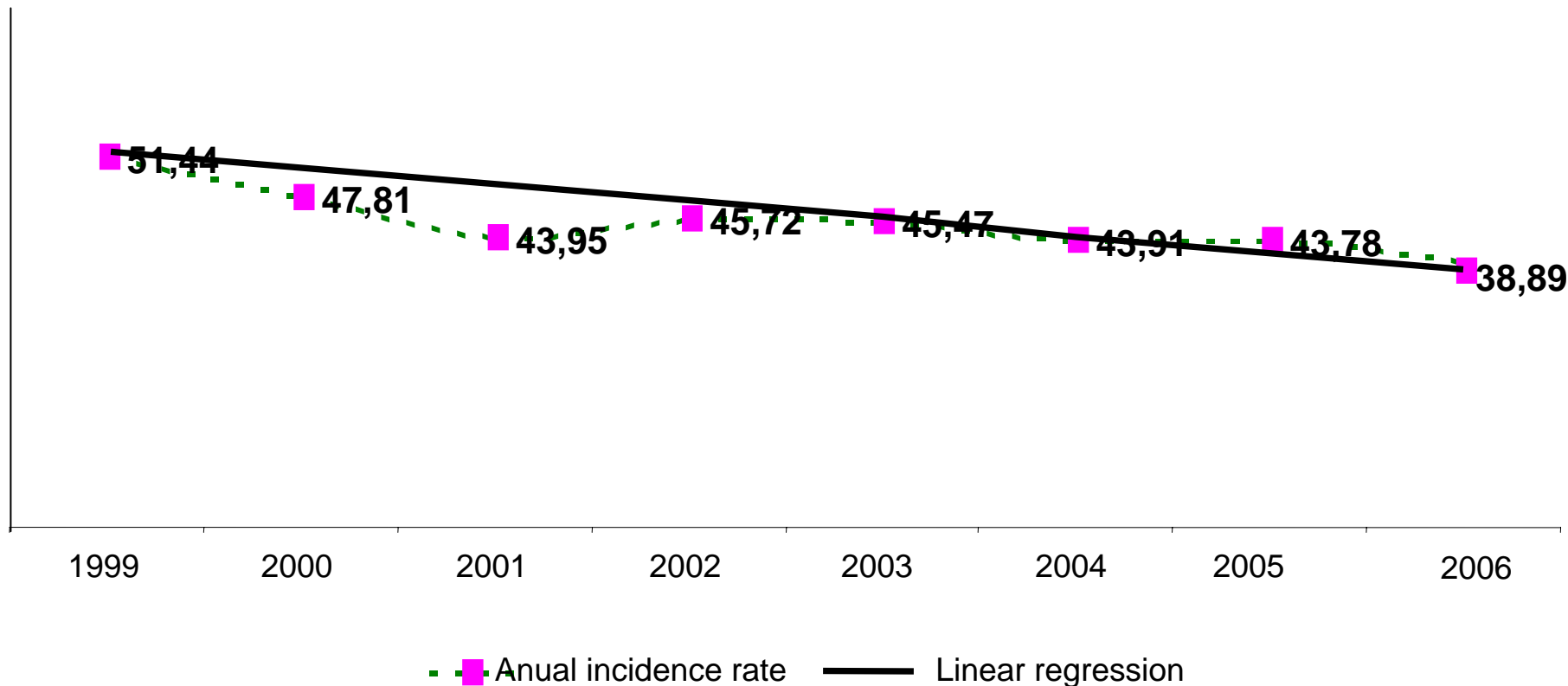
94.000 estimated cases (WHO, 2007)

70% of the cases are concentrated in 315 municipalities

5.000 deaths per year

20% of all deaths among AIDS patients

# TB Incidence in Brazil 1999 - 2006



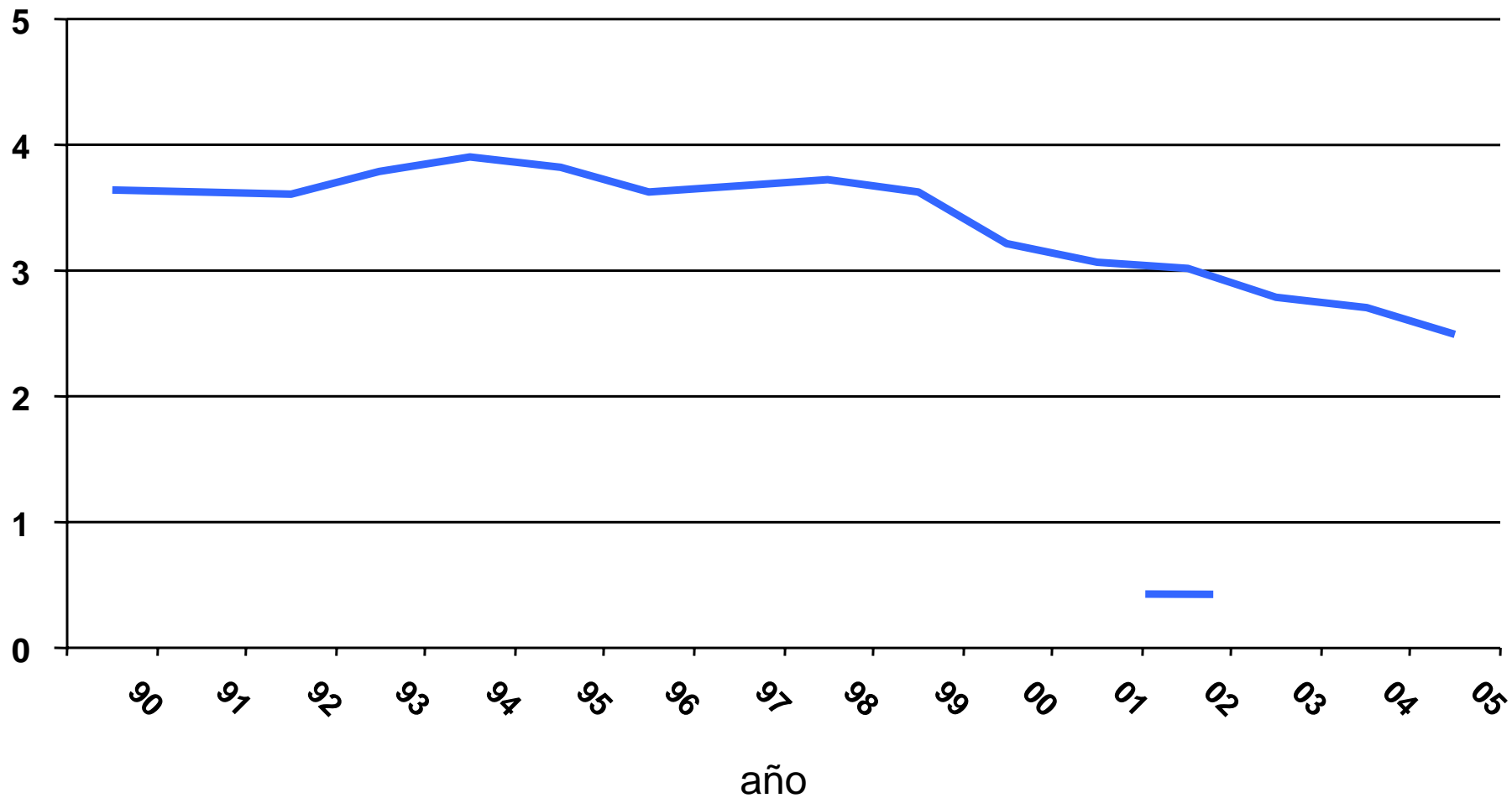
Source: SINAN em 31/12/2007

\* Dados parciais.

# Mortality TB rate – Brazil

## 1990 - 2005

Mortality rate



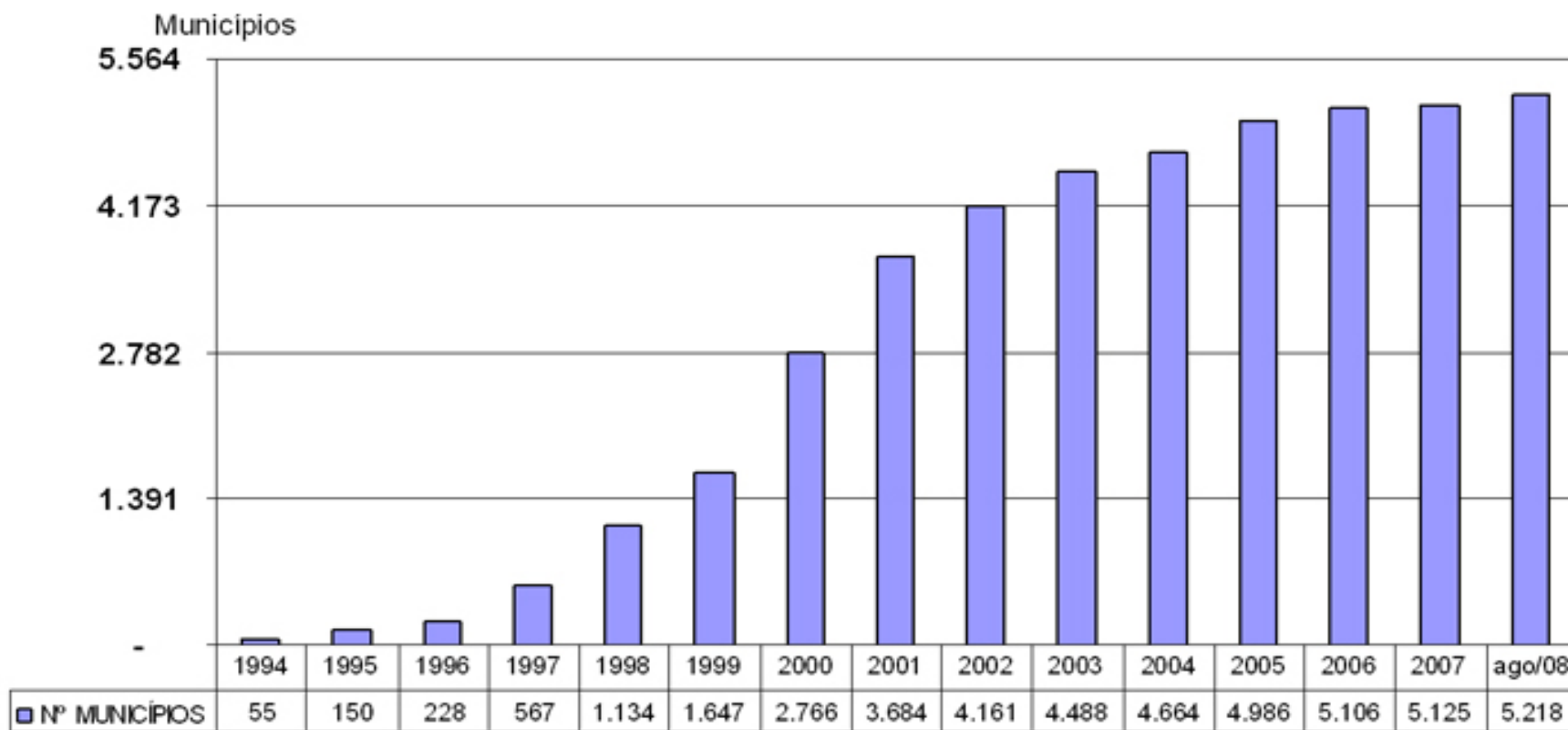
Fonte: SIM - MS

\*Defunciones/ 100.000 habitantes

## **Brazilian Health System (SUS)**

- The Brazilian health care system (SUS) provides free and universal access to all brazilians based on the primary health care.
  - 64.000 Ambulatory Health Services;
  - 45.000 Primary Health Care Units;
  - 5.800 Hospitals Units.

# Number of municipalities with Family Health Care 1994 – 2008



# **Brazilian Health System (SUS)**

## **SUS – Institutional structure:**

- 1 National Health Council;
- 27 Federal State Councils;
- 5.642 Municipalities Councils.

This councils are composed by governmental institutions, health care professionals entities and civil society.

# Why it is so important to engage all partners?

- National Aids Program experience
  - CAMS
- National TB Program experience
  - Brazilian Stop TB Partnership

# Conclusions

- The civil society participation in the Health Care System can increase access and improve quality to the services.
- Due to it, this participation helps to increase citizenship and democracy among society.

Welcome to Partners`  
Forum Rio 2009!

