

# **Renewing HIV Prevention: Solutions for Today's Challenges**

Ronald O. Valdiserri, M.D., M.P.H.

Deputy Director

National Center for HIV, STD, and TB Prevention

Centers for Disease Control and Prevention

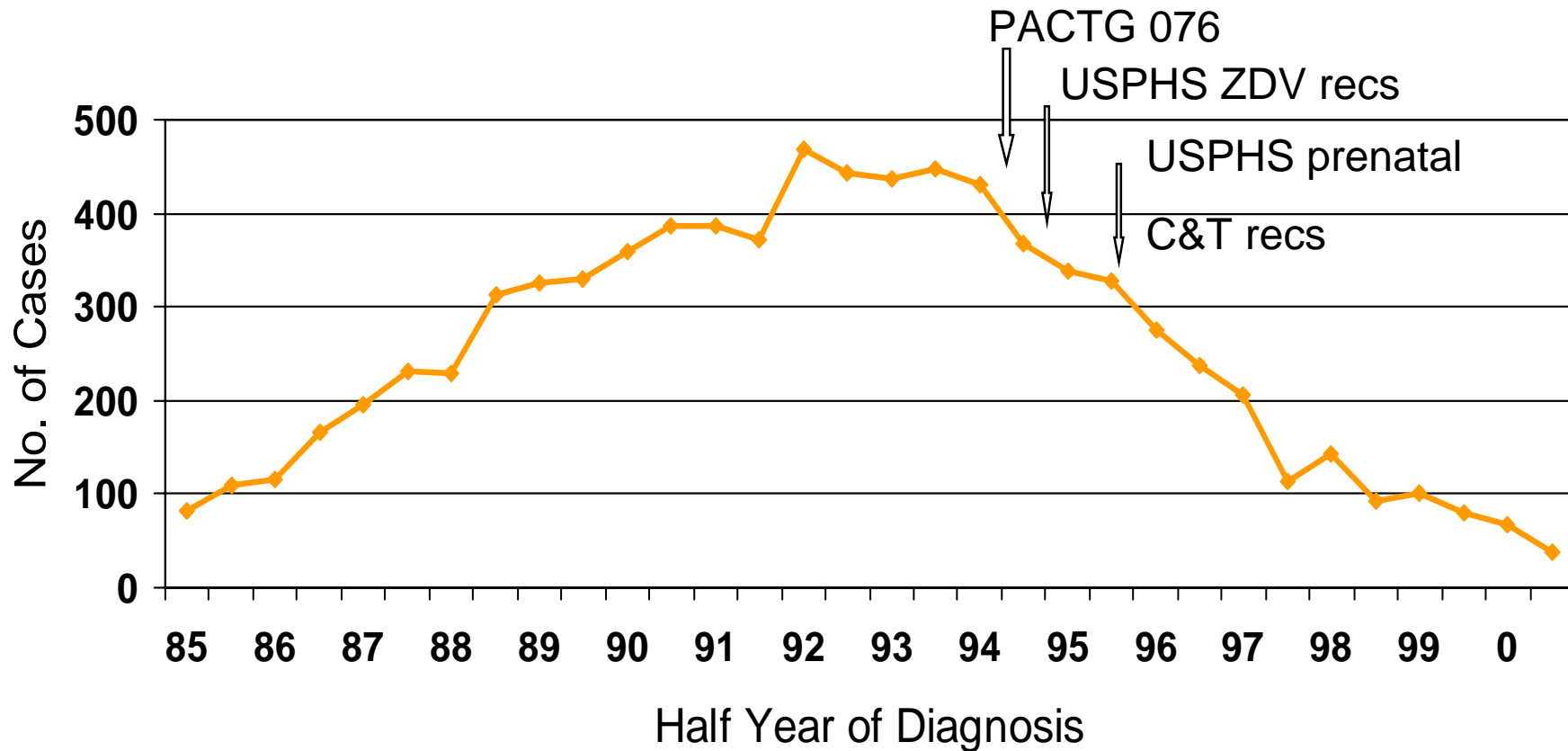
# Principle Conclusions

- Stabilization in AIDS cases
- Growing impact among heterosexuals in communities of color
- High levels of HIV infection among gay and bisexual men of all races

# How Do We React?

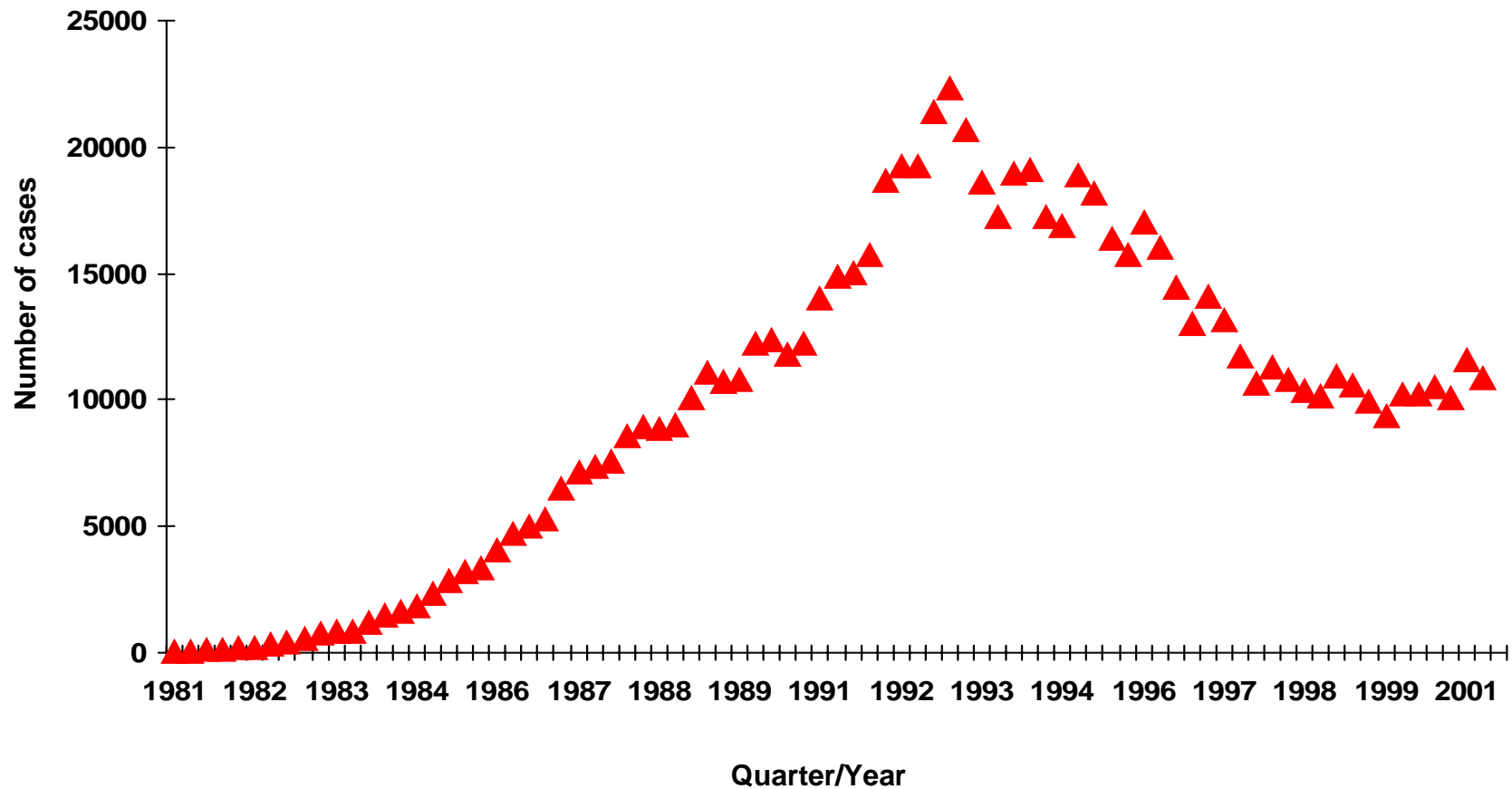
- From Alarm to Action
- From Barriers to Solutions
- From Complacency to Determination

# Incidence of perinatally acquired AIDS United States, 1985-December 2000\*



\*Reported through June 2001

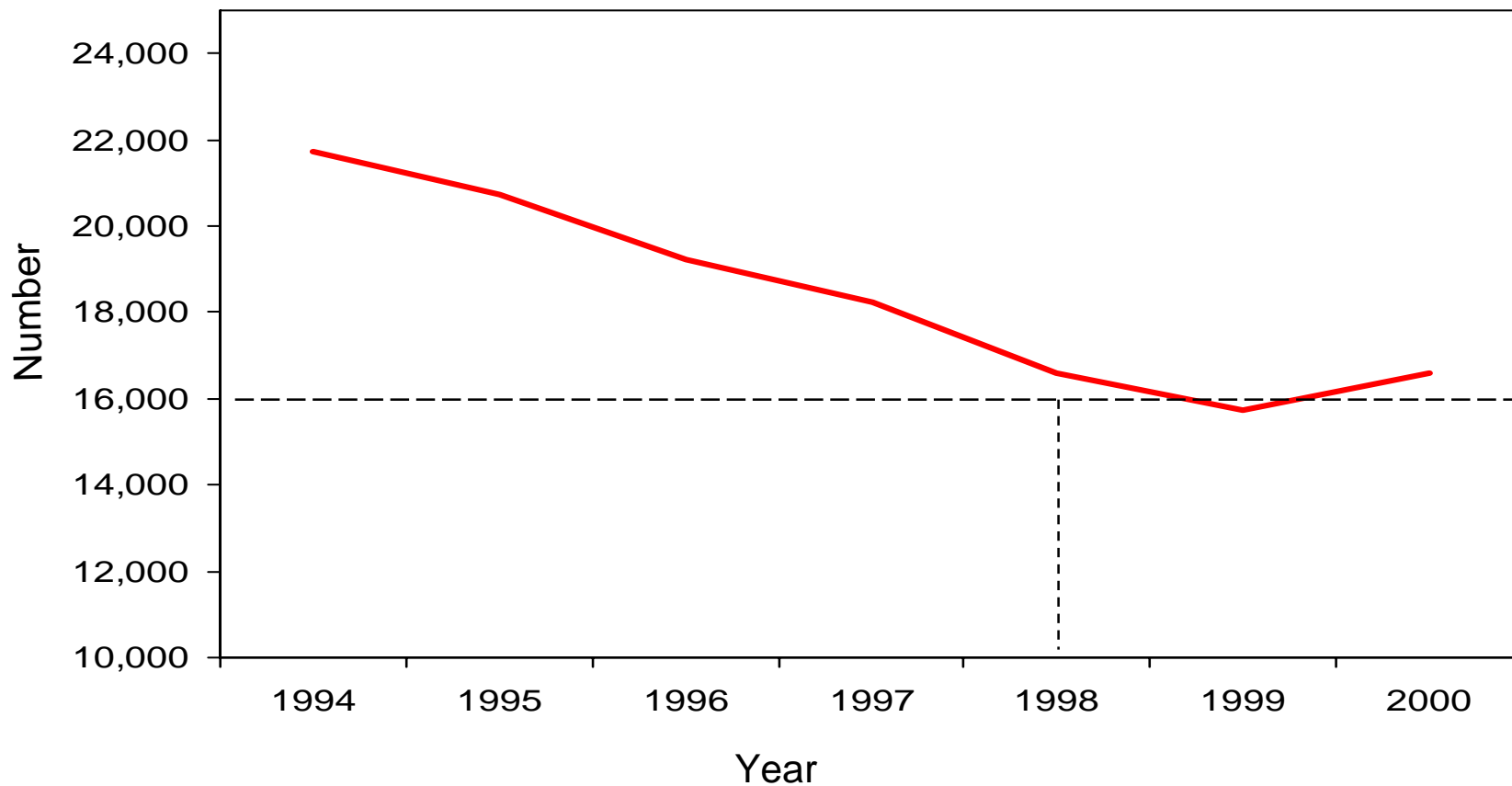
# Estimated AIDS incidence in the U.S., by quarter year of diagnosis, 1981 – June 2001



# Additional Progress in Reducing AIDS Will Require

- Expanded Testing and Improved Links to Care:
  - 400,000-500,000 Americans with HIV Not Tested or Treated
- Improved Treatment Options and Strategies to Address:
  - Difficulty with Adherence
  - Side Effects
  - Resistance
  - Treatment Failure
- Reductions in New Infections

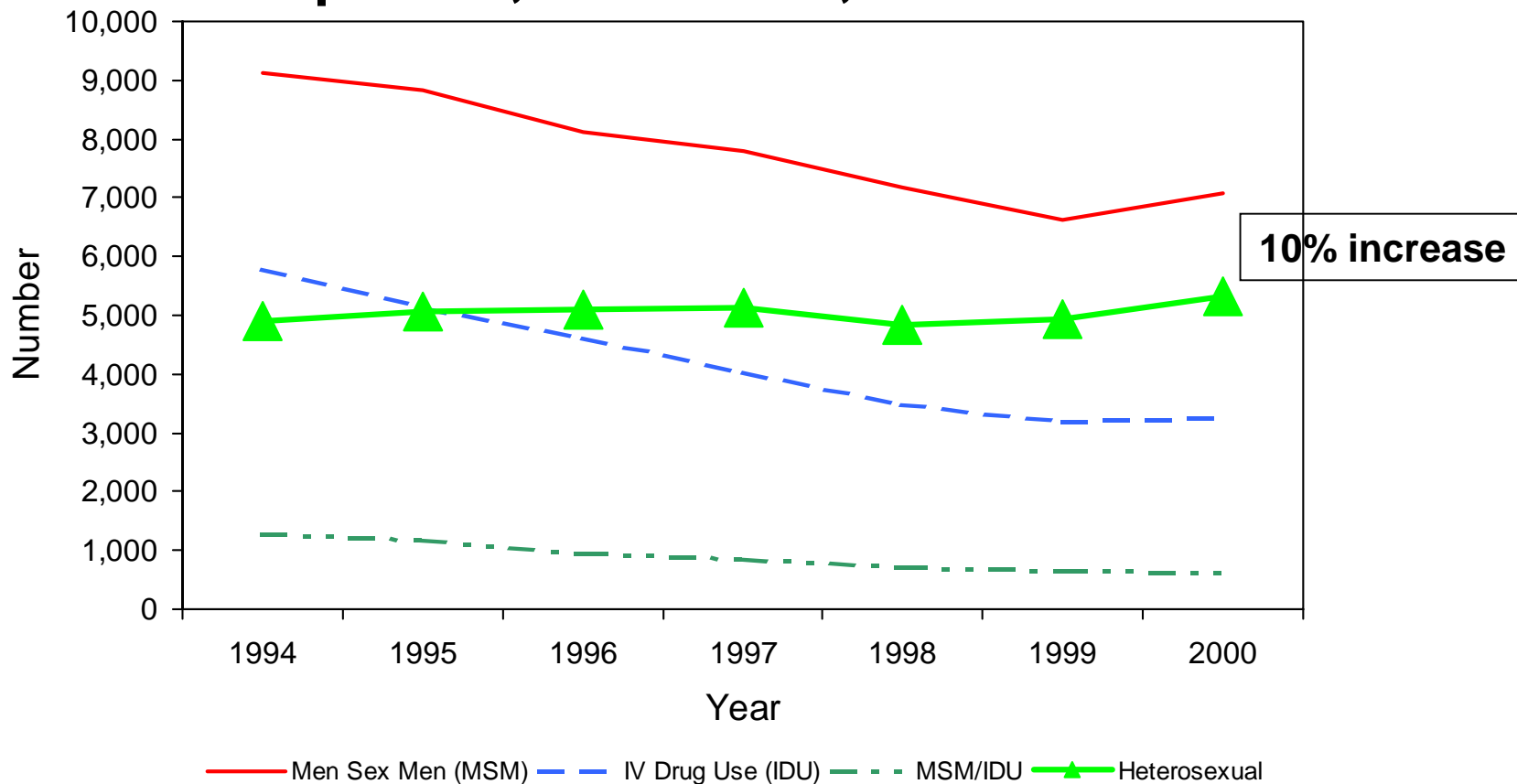
# Estimated number of HIV diagnoses\*, 25 states\*\* 1994 - 2000



\* Includes HIV and HIV with AIDS; adjusted for reporting delays.

\*\* Alabama, Arizona, Arkansas, Colorado, Idaho, Indiana, Louisiana, Michigan, Minnesota, Mississippi, Missouri, Nevada, New Jersey, North Carolina, North Dakota, Ohio, Oklahoma, South Carolina, South Dakota, Tennessee, Utah, Virginia, West Virginia, Wisconsin, Wyoming.

# Estimated number of HIV diagnoses\* by mode of exposure, 25 states\*\*, 1994-2000\*\*\*

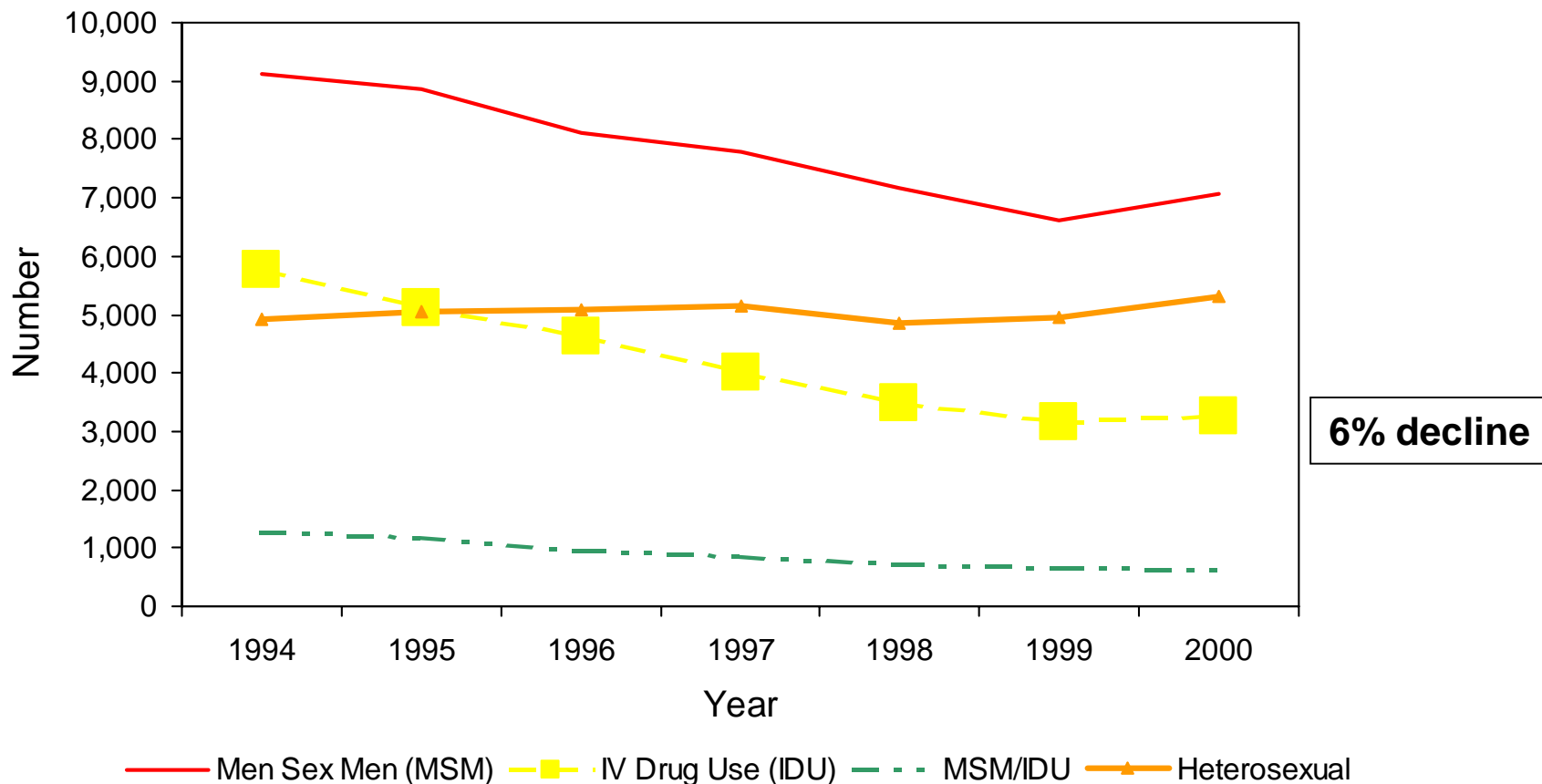


\* Includes HIV and HIV with AIDS; adjusted for reporting delays and redistribution of reports without information on mode of exposure.

\*\* Alabama, Arizona, Arkansas, Colorado, Idaho, Indiana, Louisiana, Michigan, Minnesota, Mississippi, Missouri, Nevada, New Jersey, North Carolina, North Dakota, Ohio, Oklahoma, South Carolina, South Dakota, Tennessee, Utah, Virginia, West Virginia, Wisconsin, Wyoming.

\*\*\* While Hispanics do not comprise a large portion of the epidemic in these states, they are disproportionately impacted on a national level.

# Estimated number of HIV diagnoses\*, by mode of exposure, 25 states\*\*, 1994-2000\*\*\*

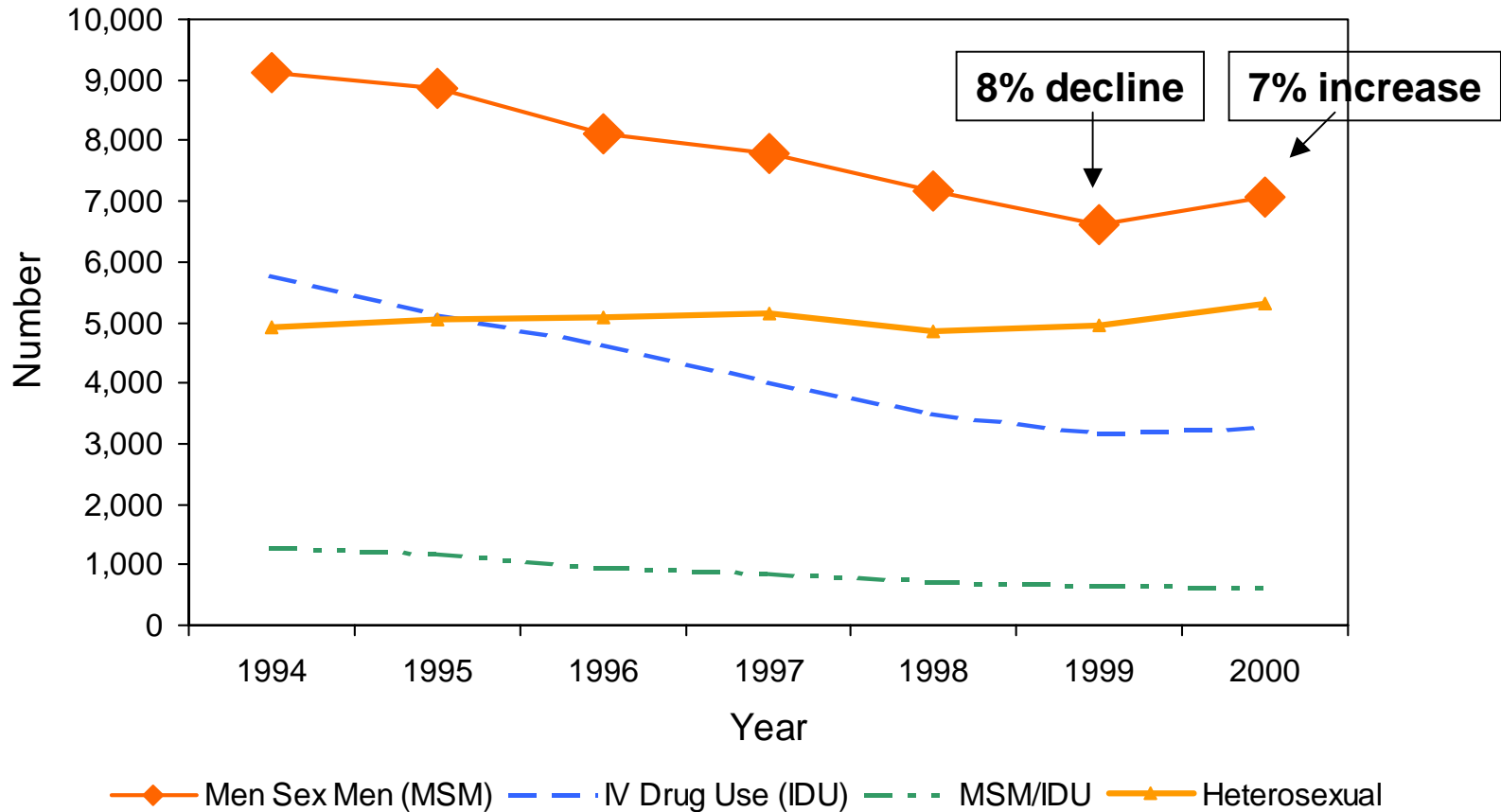


\* Includes HIV and HIV with AIDS; adjusted for reporting delays and redistribution of reports without information on mode of exposure.

\*\* Alabama, Arizona, Arkansas, Colorado, Idaho, Indiana, Louisiana, Michigan, Minnesota, Mississippi, Missouri, Nevada, New Jersey, North Carolina, North Dakota, Ohio, Oklahoma, South Carolina, South Dakota, Tennessee, Utah, Virginia, West Virginia, Wisconsin, Wyoming.

\*\*\* While Hispanics do not comprise a large portion of the epidemic in these states, they are disproportionately impacted on a national level.

# Estimated number of HIV diagnoses\* by mode of exposure, 25 states\*\*, 1994-2000\*\*\*

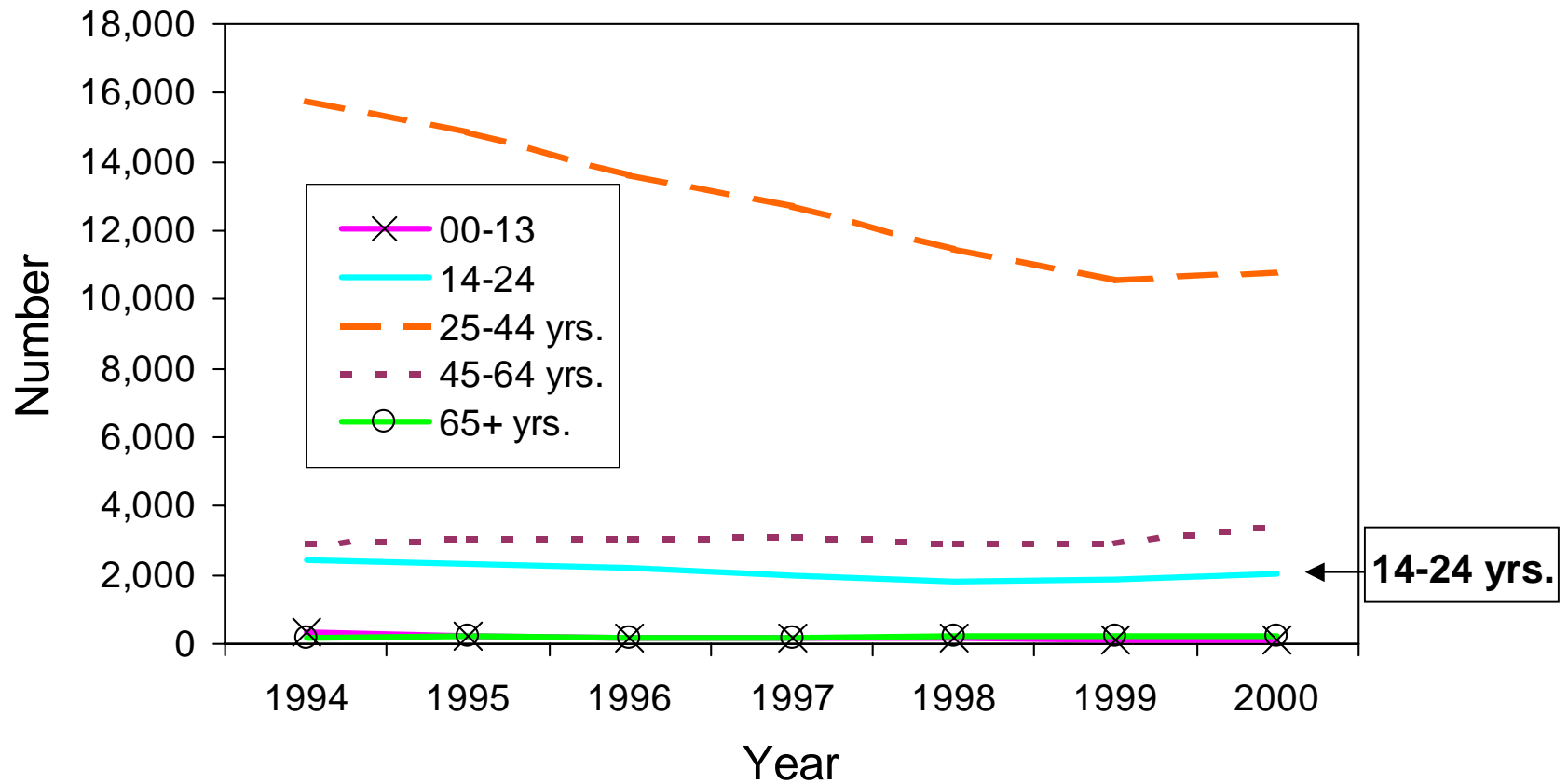


\* Includes HIV and HIV with AIDS; adjusted for reporting delays and redistribution of reports without information on mode of exposure.

\*\* Alabama, Arizona, Arkansas, Colorado, Idaho, Indiana, Louisiana, Michigan, Minnesota, Mississippi, Missouri, Nevada, New Jersey, North Carolina, North Dakota, Ohio, Oklahoma, South Carolina, South Dakota, Tennessee, Utah, Virginia, West Virginia, Wisconsin, Wyoming.

\*\*\* While Hispanics do not comprise a large portion of the epidemic in these states, they are disproportionately impacted on a national level.

# Estimated number of HIV diagnoses\*, by age-group and year of diagnosis - 25 states\*\*, 1994-2000

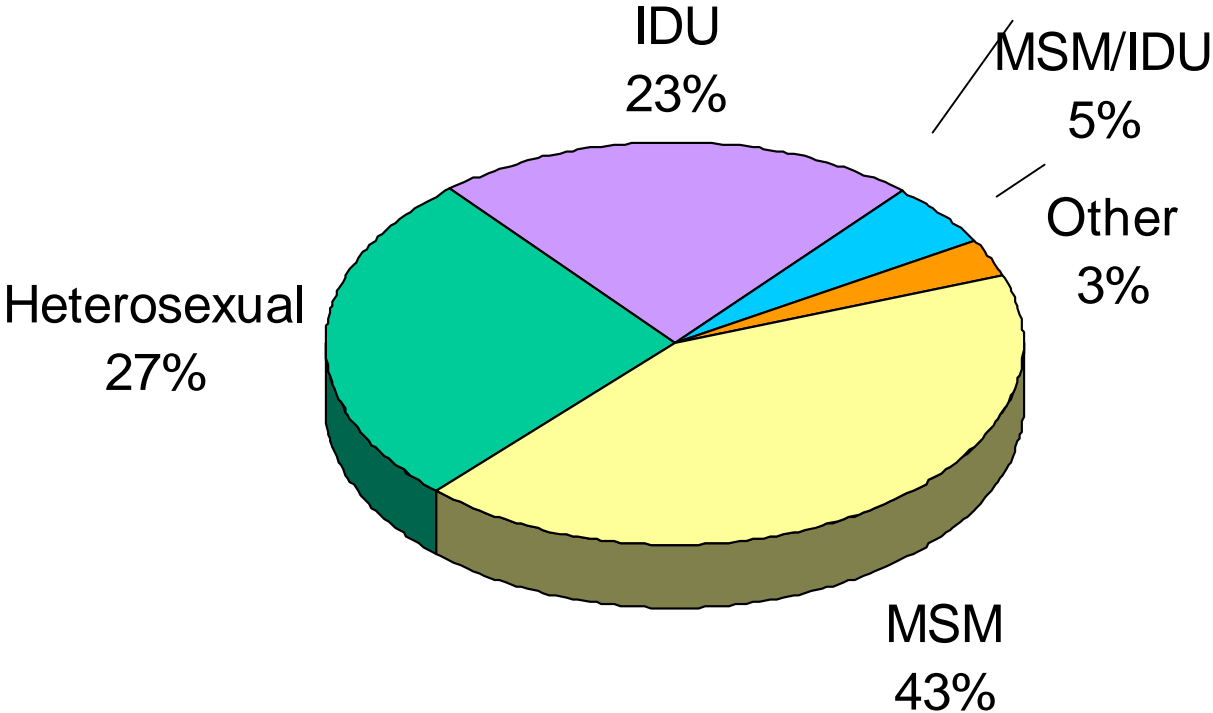


\* Includes all new HIV diagnoses with and without AIDS. Adjusted for reporting delays and redistribution of exposure for cases reported without information on mode of exposure.

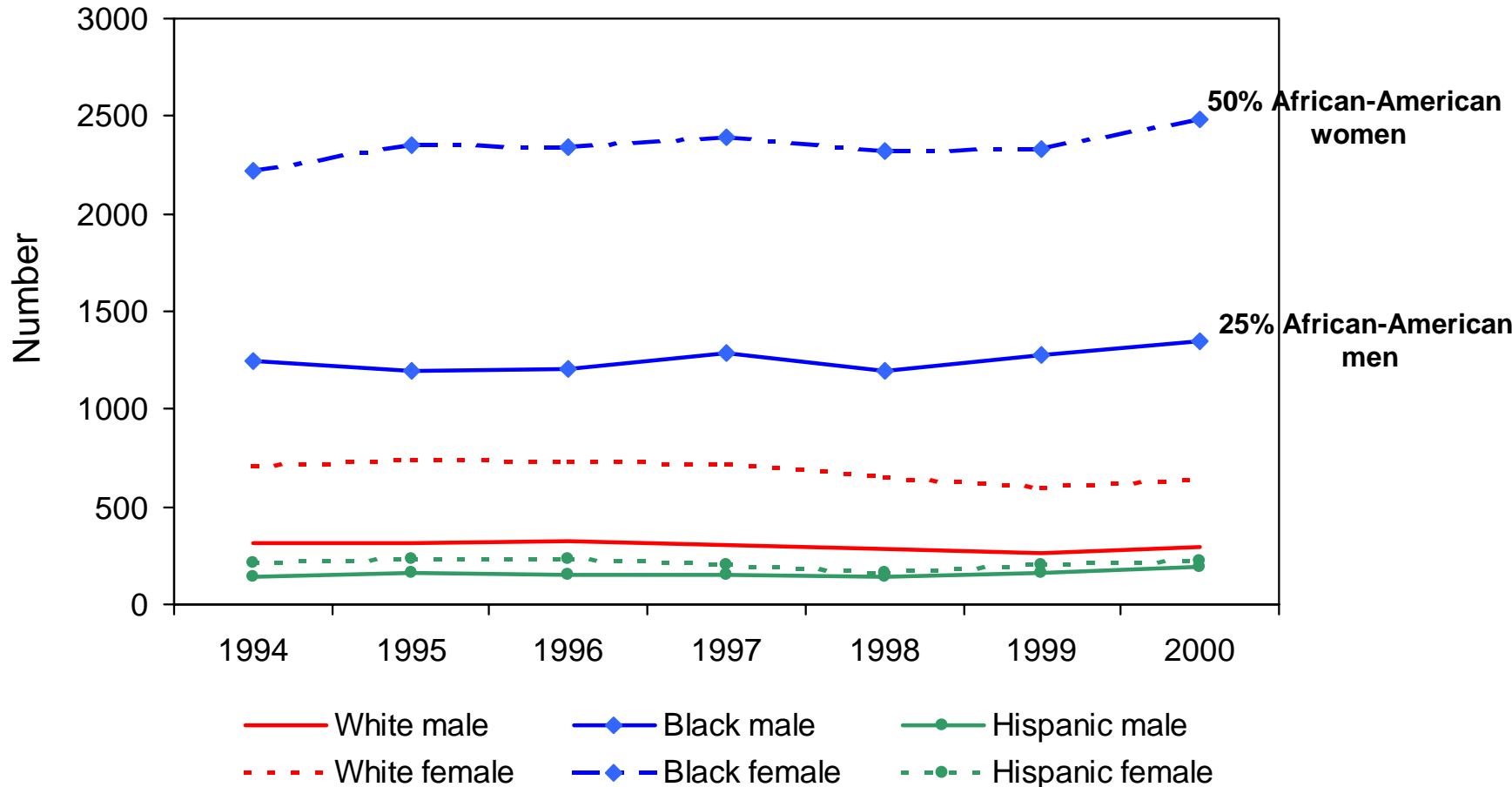
\*\* Alabama, Arizona, Arkansas, Colorado, Idaho, Indiana, Louisiana, Michigan, Minnesota, Mississippi, Missouri, Nevada, New Jersey, North Carolina, North Dakota, Ohio, Oklahoma, South Carolina, South Dakota, Tennessee, Utah, Virginia, West Virginia, Wisconsin, and Wyoming.

# Estimated HIV diagnoses by mode of exposure, 25 states, 1994 – 2000

(N=128,813)



# Estimated number of HIV diagnoses\*, for heterosexuals, by race\*\* and gender, 25 states\*\*\*, 1994 - 2000

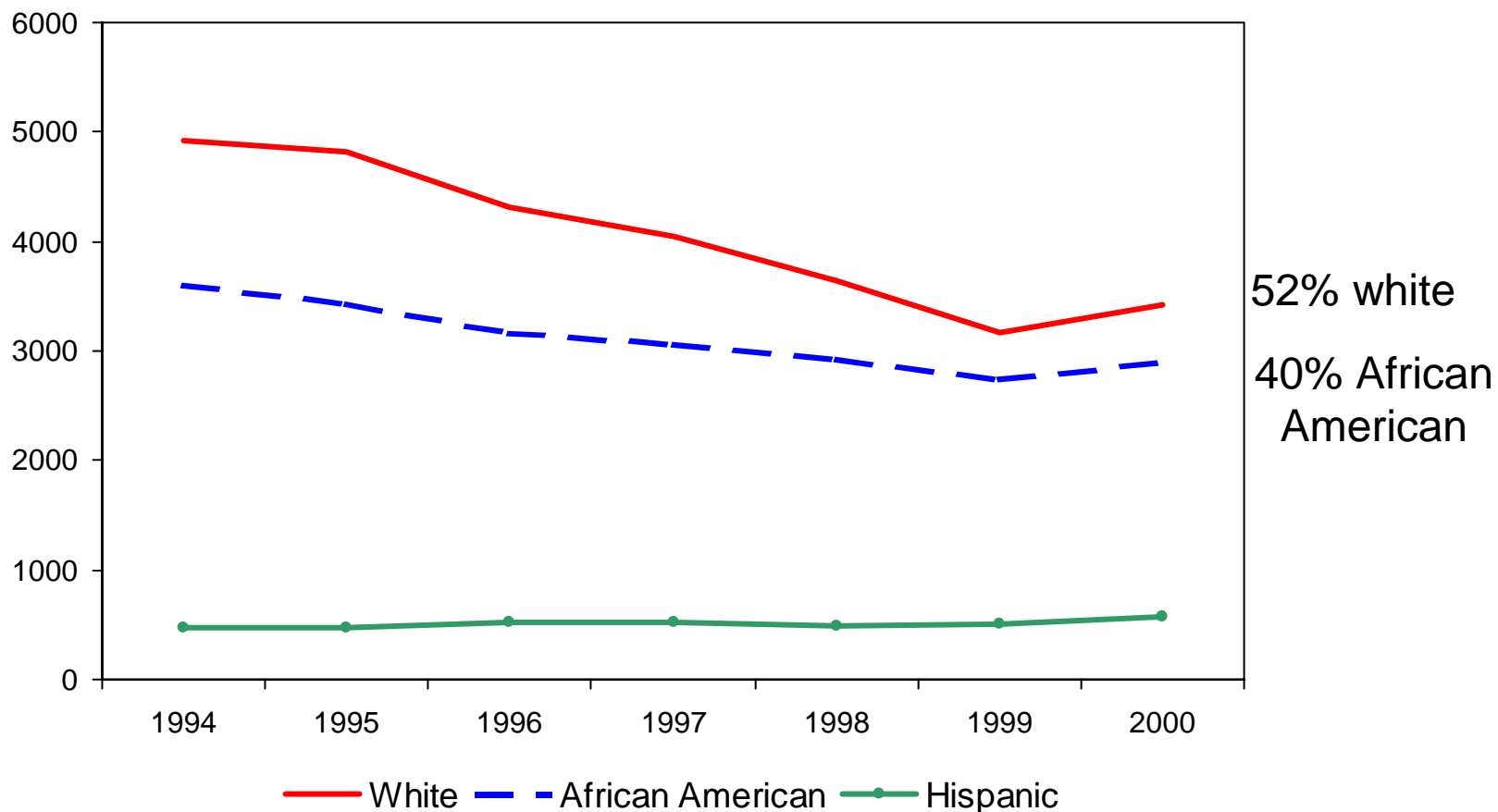


\* Includes HIV and HIV with AIDS; adjusted for reporting delays and redistribution of reports without information on mode of exposure.

\*\* While Hispanics do not comprise a large portion of the epidemic in these states, they are disproportionately impacted on a national level.

\*\*\* Alabama, Arizona, Arkansas, Colorado, Idaho, Indiana, Louisiana, Michigan, Minnesota, Mississippi, Missouri, Nevada, New Jersey, North Carolina, North Dakota, Ohio, Oklahoma, South Carolina, South Dakota, Tennessee, Utah, Virginia, West Virginia, Wisconsin, Wyoming.

# Estimated number of HIV diagnoses\* for men who have sex with men, by race/ethnicity\*\*, 25 states\*\*\* 1994 - 2000



\* Includes HIV and HIV with AIDS; adjusted for reporting delays and redistribution of reports without information on mode of exposure.

\*\* While Hispanics do not comprise a large portion of the epidemic in these states, they are disproportionately impacted on a national level.

\*\*\* Alabama, Arizona, Arkansas, Colorado, Idaho, Indiana, Louisiana, Michigan, Minnesota, Mississippi, Missouri, Nevada, New Jersey, North Carolina, North Dakota, Ohio, Oklahoma, South Carolina, South Dakota, Tennessee, Utah, Virginia, West Virginia, Wisconsin, Wyoming.

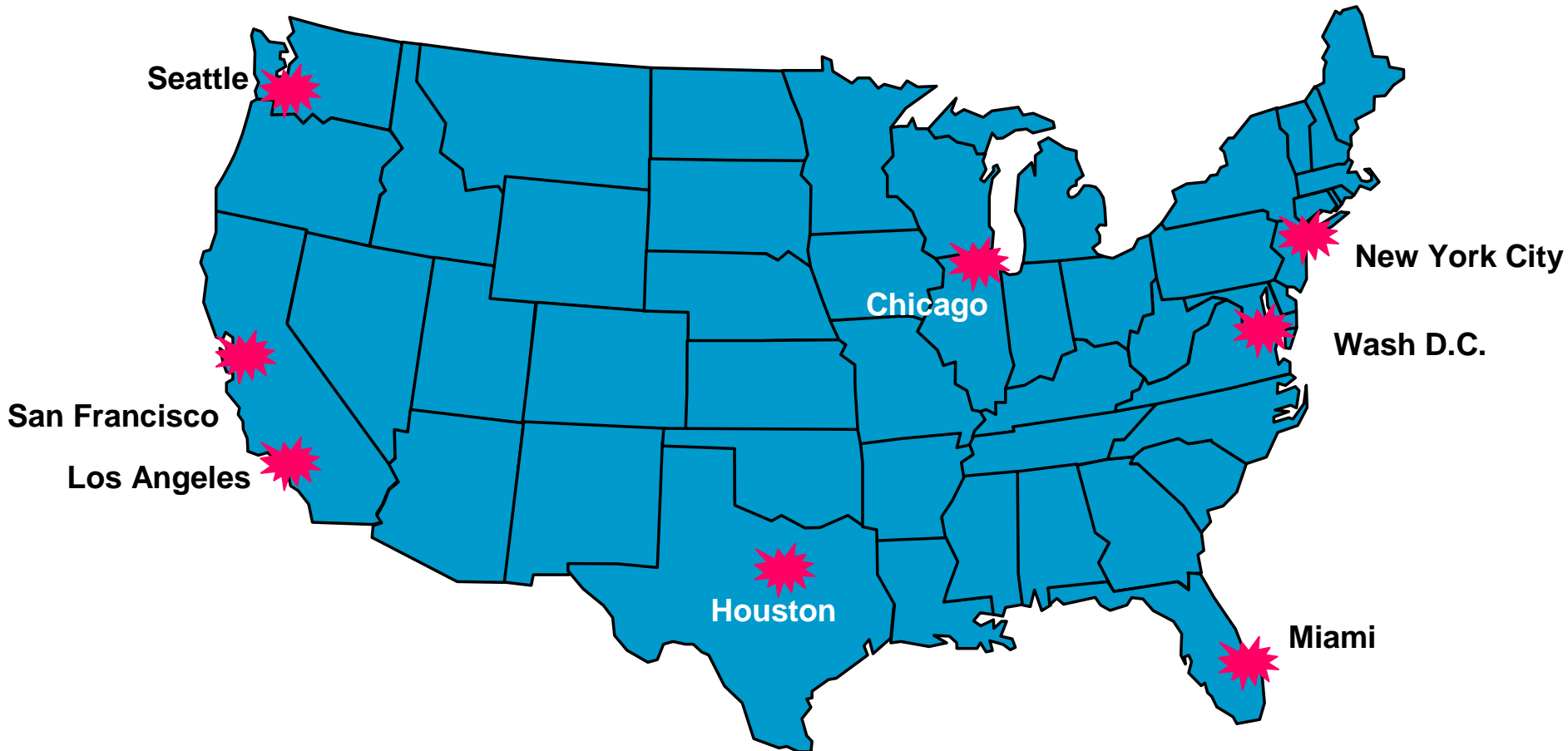
## Caveats:

- Latinos under-represented in these states, but impacted nationally
- 25 states represent only  $\frac{1}{4}$  of AIDS cases, need other data as well
- Signs of potential increases among MSM in many areas not included—California, New York, Florida

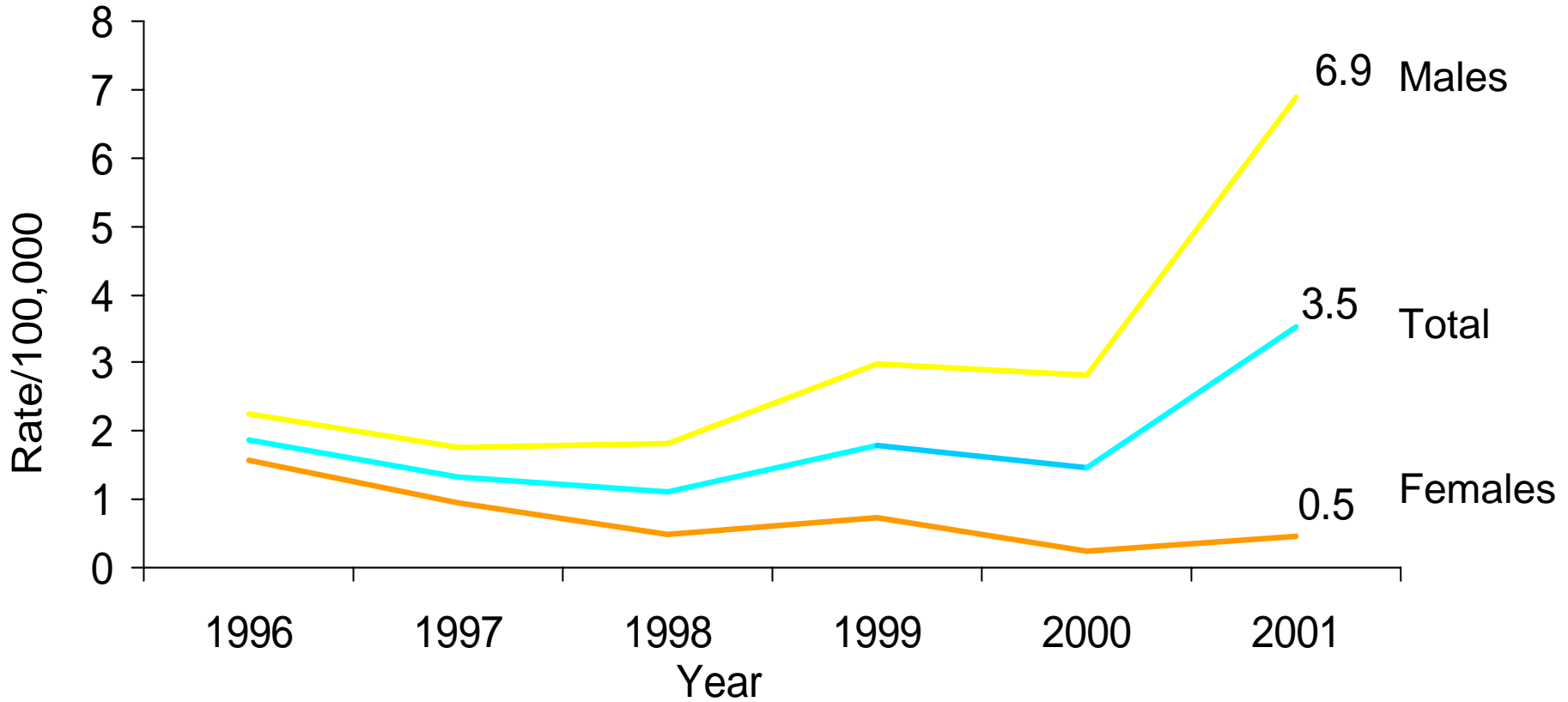
## Other MSM Data:

- New data from five cities finds high levels of infection among MSM of all races
- Increases in STDs and risk reported from multiple cities

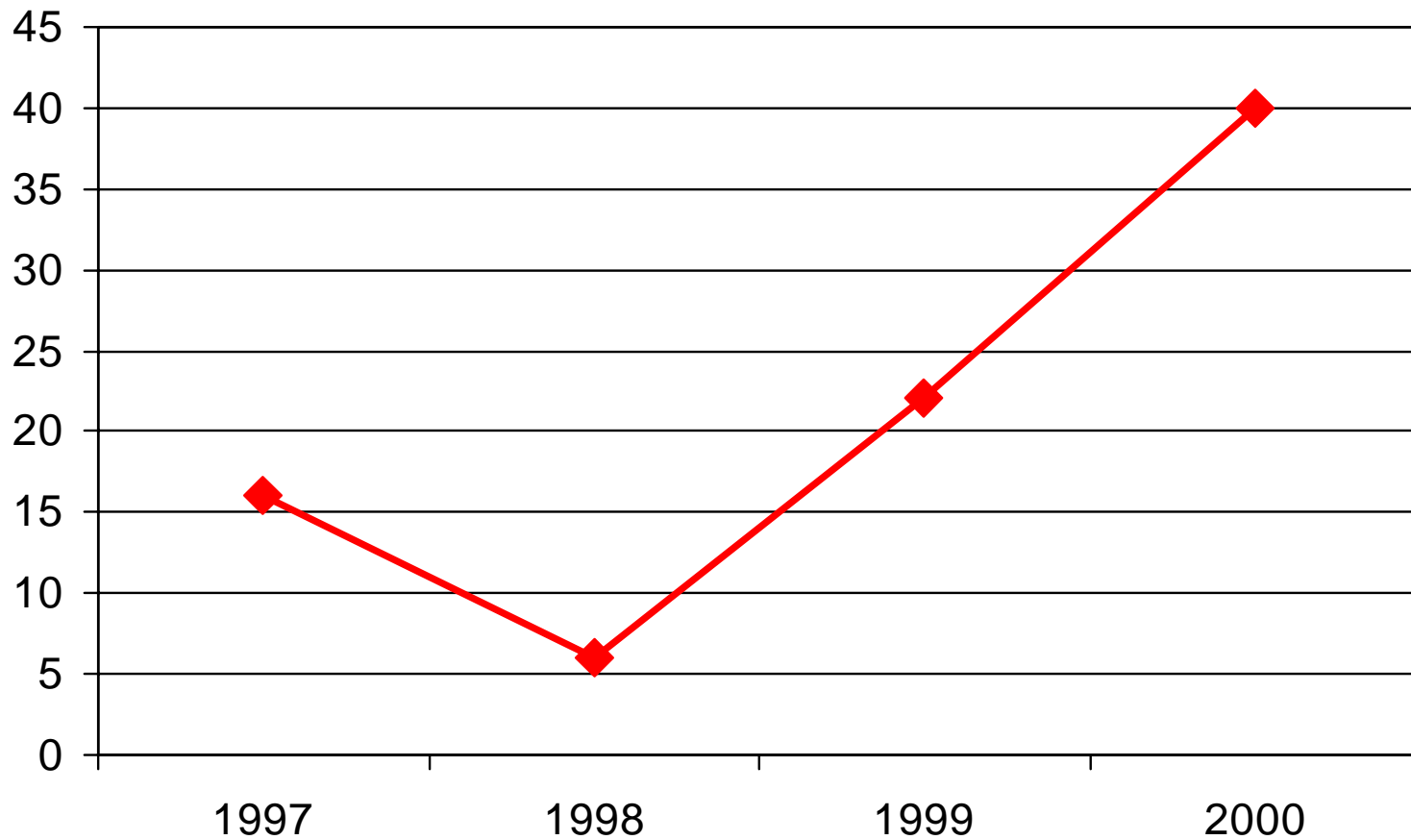
# Increases in syphilis among MSM 1998-2001



# P&S syphilis rates, by gender New York City, 1996 - 2001



# Primary and secondary syphilis cases, gay/bisexual men, San Francisco, 1996 - 2000



## Conclusions

- HIV incidence appears stable overall
- Deceptive stability may be masking increases among heterosexuals and gay and bisexual men in some areas
- African Americans are most dramatically impacted, both gay and bisexual men and women infected heterosexually

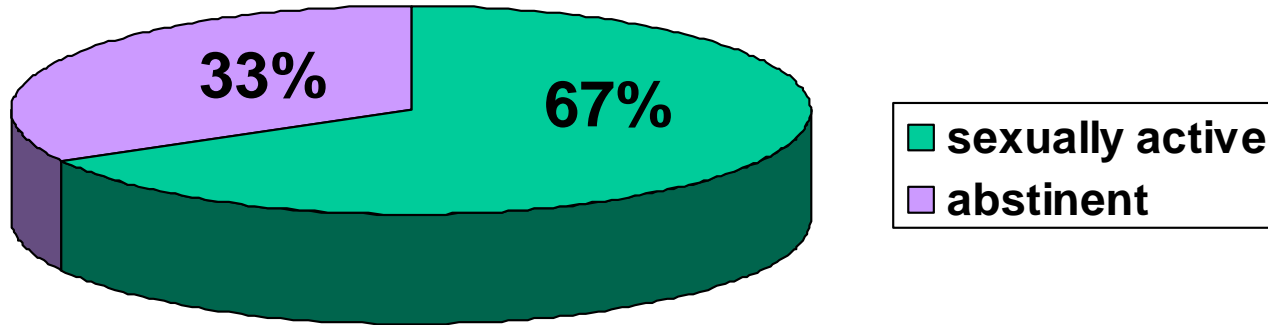
# Next Steps

- Recognize Today's Epidemic is Different
  - Populations
  - Activities
  - Science

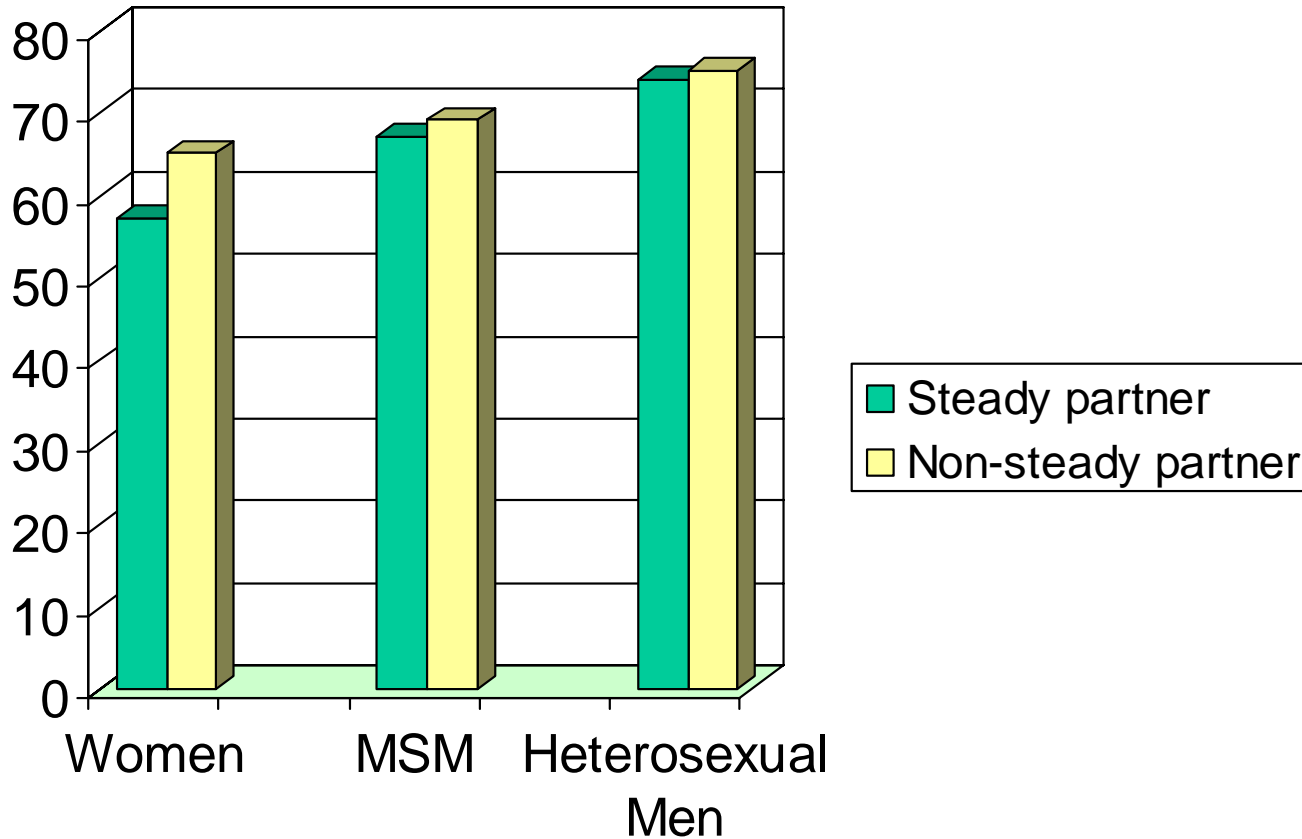
## Today's Epidemic Consists of:

- Growing population of HIV-infected who face lifetime behavior change
  - 850,000 – 900,000 and growing
  - HIV-infected living longer, healthier — and sexually active lives

# Percent of HIV-positive individuals who are sexually active



# Percent of sexually active HIV-positive individuals using condom at last sex



## Today's Epidemic Consists of:

- Growing population of HIV-infected who face lifetime behavior change
- High levels of infection in communities plagued by inequities

# Today's Epidemic Consists of:

- Growing population of HIV-infected who face lifetime behavior change
- High levels of infection in communities plagued by inequities
- Gay men of all races with unique cultural influences

# Today's Epidemic Consists of:

- Growing population of HIV-infected who face lifetime behavior change
- High levels of infection in communities plagued by inequities
- Gay men of all races with unique cultural influences
- Wide spectrum of individuals at risk

# Today's Epidemic Consists of:

- Growing population of HIV-infected who face lifetime behavior change
- High levels of infection in communities plagued by inequities
- Gay men of all races with unique cultural influences
- Wide spectrum of individuals at risk
- Growing apathy

# Solutions for Today's Challenges Require Science Plus Action

- Cutting Edge Research
- Innovative Programs
- Expanding Proven Approaches
- Piloting New Approaches
- Change in Attitude

# Renewal in HIV Prevention

- Make New and
- Make Strong Again